



Outdoor Lighting



Hotel Lighting



Office Lighting



Commercial Lighting

LED 4M LIGHTING CO.,LIMITED

Business Center:
2/F., Panasonic Building, Hoveyzeh St., Beheshti St.,Tehran, Iran
TEL:(98)2188504632 FAX:(98)2188753551

Factory:
No.2077, Ferdowsi 11 St., Emam Reza Road, AbbasAbad Industrial Zone, Pakdasht, Tehran, Iran
TEL:(98)2136428396 FAX:(98)2136428398

E-mail:sales@led4m.com

2017-2018

8

2017-2018

Focus on the value of lights



About us

Established in 1993, Moein Bargh Tehran (MBT) Co.,Ltd is a LED professional manufacture enterprise combining R&D, manufacturing, trade and service of LED lighting system.

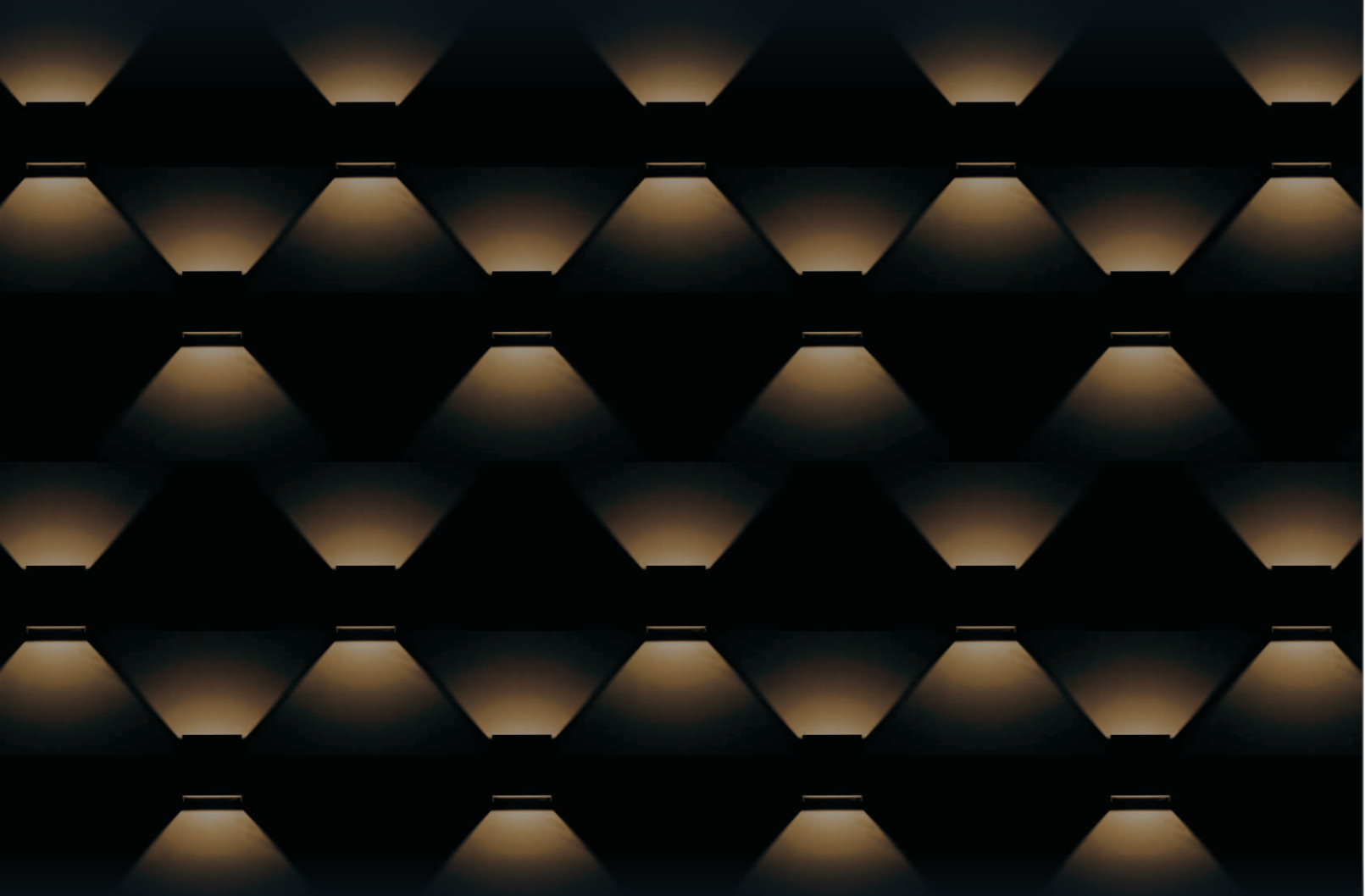
The company has strong R&D capabilities. We can provide perfect, continuable, intelligent solution for lighting control. And also provide users with one-to-one matching services. The products have obtained certifications with CE, ROHS and ERP... We

exported the production to all over the world,expecially to Europe, Canada , Asia, etc.

"Focus on the value of lights" is our operation principle. From R&D, product development, every aspect of the program is customized accurate calculation, scientific experiments, so that every beam of light can provide its value, the full interpretation of "The perfect fusion of lights with life & lights with building."

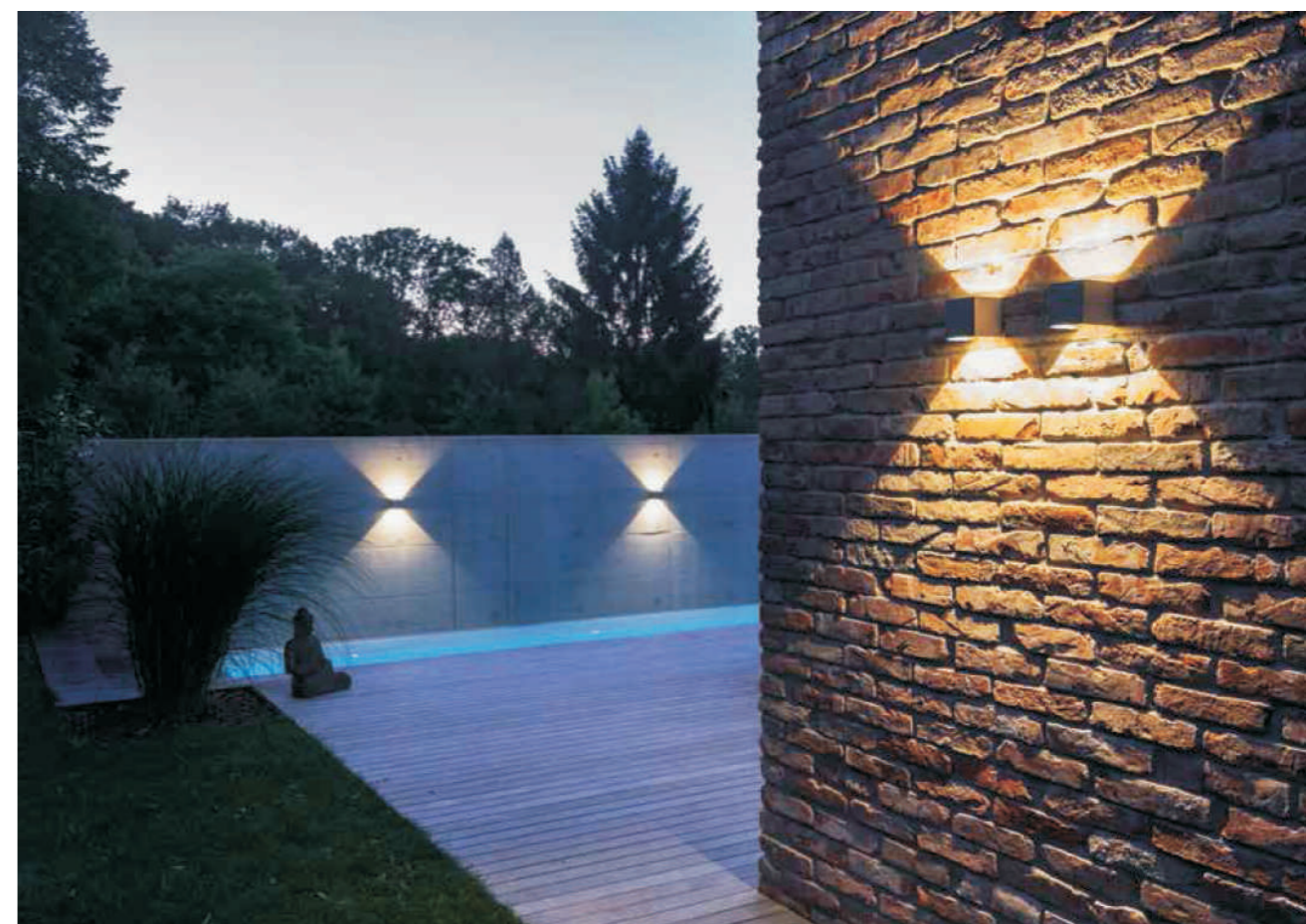


i-WALL LIGHT SERIES



- Surface mounted with COB LED
- Wide Beam Angle
- Efficiency:85Lm/W
- Body of aluminium die casting
- Luminaires are equipped with electronic driver

Order No.	Power(W)	Voltage(V)	CRI	Beam Angle(°)	SIZE(MM)
KDR-66016	7	100-240	85	90+90	100*105*H100





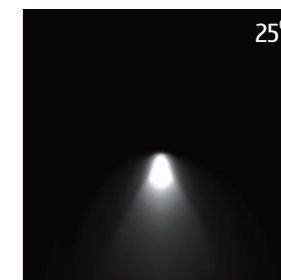
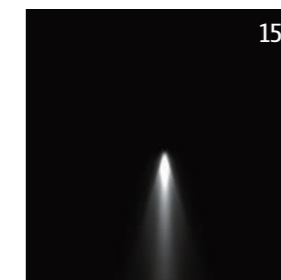
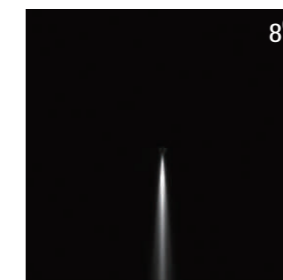
- Surface mounted with COB LED
- Narrow Beam Angle
- Efficiency:85Lm/W
- Body of aluminium
- Luminaires are equipped with electronic driver

Order No.	Power(W)	Voltage(V)	CRI	Beam Angle(°)	SIZE(MM)
KDR-65001-COB-1	7	100-240	85	8/15/25	Φ65*H160*W110
KDR-65002-COB-1	12	100-240	85	8/15/25	Φ90*H160*W155
KDR-65003-COB-1	24	100-240	85	8/15/25	Φ110*H200*W170
KDR-65004-COB-1	30	100-240	85	8/15/25	Φ145*H210*W300



- Surface mounted with COB LED
- Narrow Beam Angle
- Efficiency:85Lm/W
- Body of aluminium die casting
- Luminaires are equipped with electronic driver

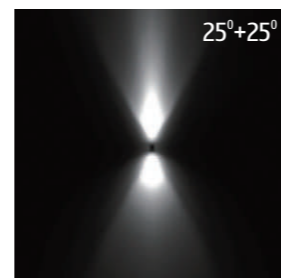
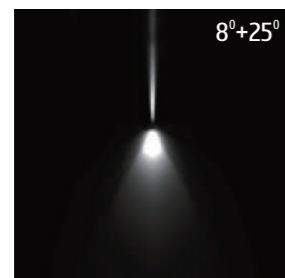
Order No.	Power(W)	Voltage(V)	CRI	Beam Angle(°)	SIZE(MM)
KDR-68001-COB-1	7	100-240	85	8/15/25	57*57*H130*W90
KDR-68002-COB-1	12	100-240	85	8/15/25	80*80*H130*W115
KDR-68004-COB-1	30	100-240	85	8/15/25	150*150*H450*W210





- Surface mounted with COB LED
- Narrow Beam Angle
- Body of aluminium
- Luminaires are equipped with electronic driver

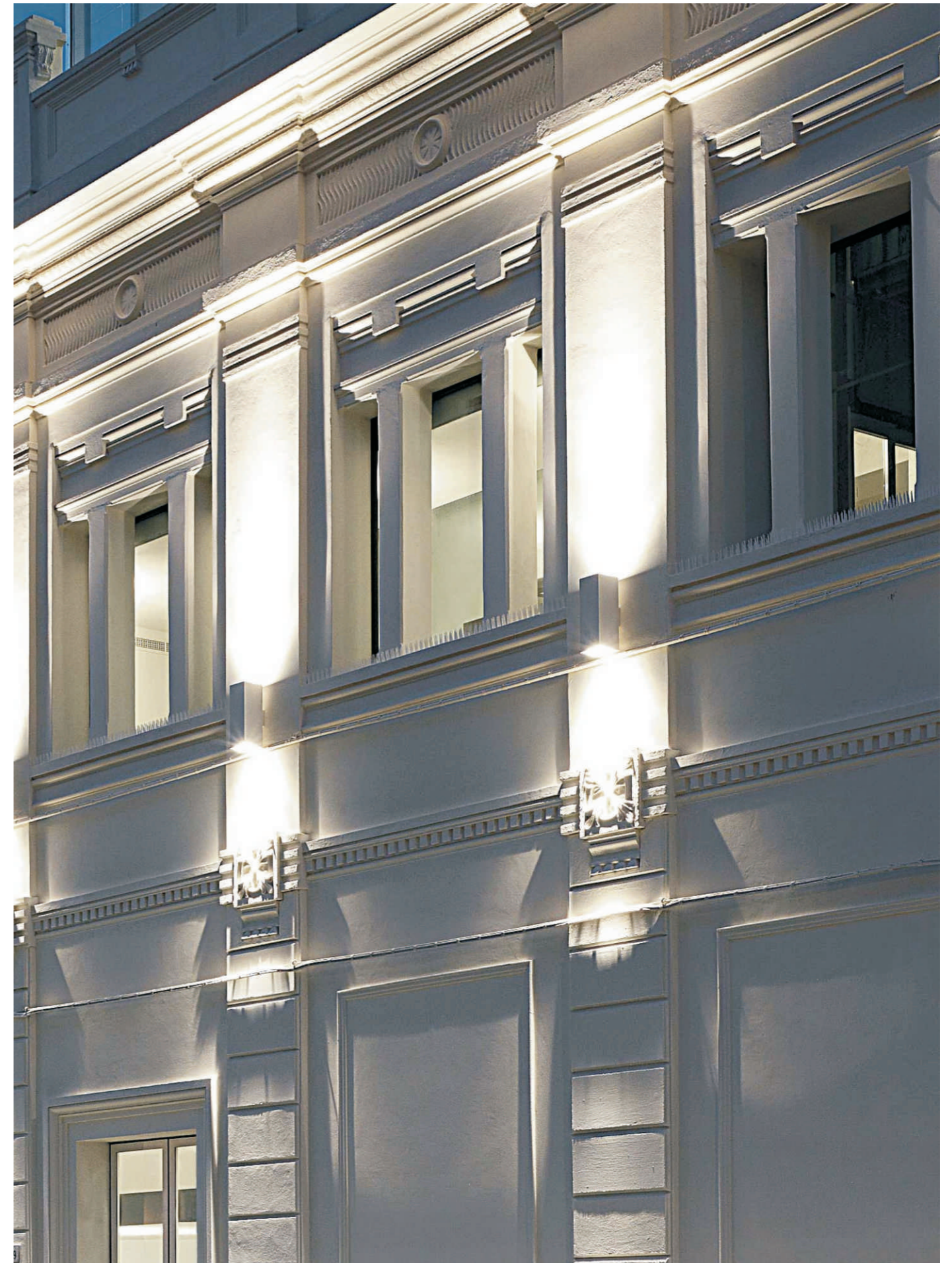
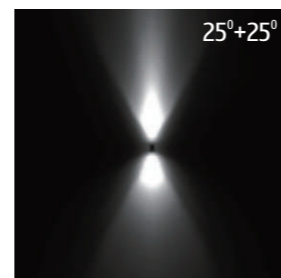
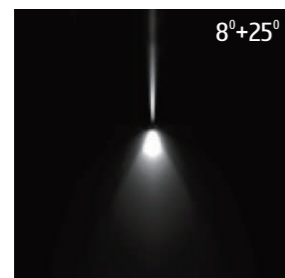
Order No.	Power(W)	Voltage(V)	CRI	Beam Angle(°)	SIZE(MM)
KDR-65001-COB-2	2*7	100-240	85	8/15/25	Φ65*H260*W110
KDR-65002-COB-2	2*12	100-240	85	8/15/25	Φ90*H260*W155
KDR-65003-COB-2	2*24	100-240	85	8/15/25	Φ110*H300*W170
KDR-65004-COB-2	2*30	100-240	85	8/15/25	Φ145*H450*W300





- Surface mounted with COB LED
- Narrow Beam Angle
- Body of aluminium
- Luminaires are equipped with electronic driver

Order No.	Power(W)	Voltage(V)	CRI	Beam Angle(°)	SIZE(MM)
KDR-68001-COB-2	2*7	100-240	85	8/15/25	57*57*H190*W90
KDR-68002-COB-2	2*12	100-240	85	8/15/25	80*80*H190*W115
KDR-68004-COB-2	2*30	100-240	85	8/15/25	150*150*H450*W210



i-SURFACE MOUNTED LIGHT



- Surface mounted with COB LED
- Narrow Beam Angle
- Efficiency:85Lm/W
- Body of aluminium
- Luminaires are equipped with electronic driver

Order No.	Power(W)	Voltage(V)	CRI	Beam Angle(°)	SIZE(MM)
KDR-65001SF-COB-1	7	100-240	85	8/15/25	Φ65*H160*W110
KDR-65002SF-COB-1	12	100-240	85	8/15/25	Φ90*H160*W155
KDR-65003SF-COB-1	24	100-240	85	8/15/25	Φ110*H200*W170
KDR-68001SF-COB-1	7	100-240	85	8/15/25	57*57*H130
KDR-68002SF-COB-1	12	100-240	85	8/15/25	80*80*H130





i-MINI SURFACE MOUNTED LIGHT



- Surface mounted with SMD LED
- Wide Beam Angle
- Efficiency:85Lm/W
- Body of aluminium
- Luminaires are equipped with electronic driver



- Surface mounted with SMD LED
- Wide Beam Angle
- Efficiency:85Lm/W
- Body of aluminium
- Luminaires are equipped with electronic driver

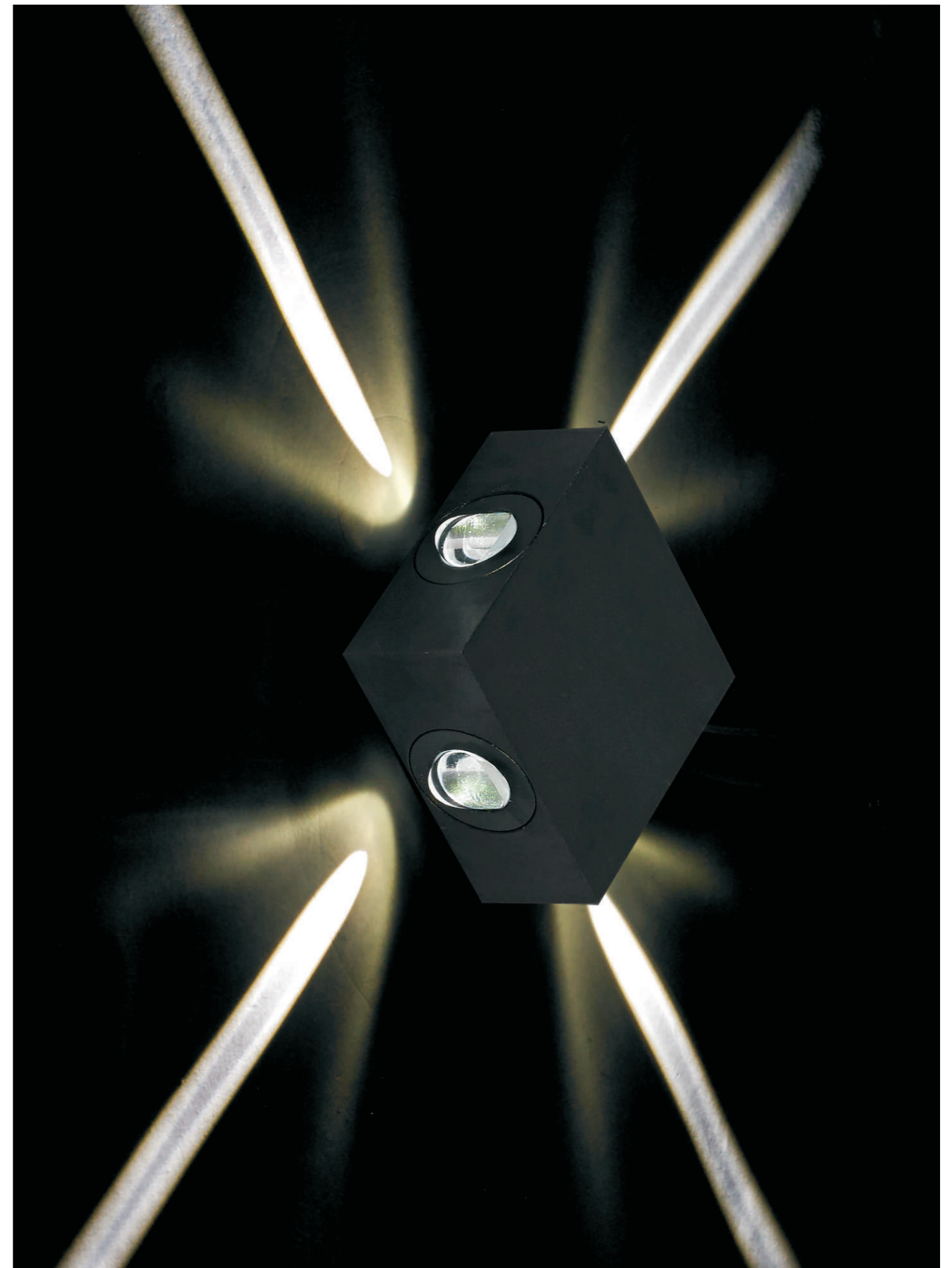
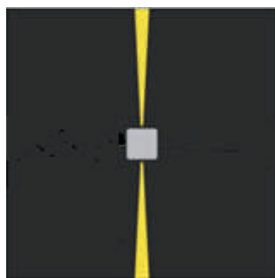
Order No.	Power(W)	Voltage(V)	CRI	Beam Angle(°)	SIZE(MM)
KDR-62001-1	3	100-240	85	120	Φ65*H15
KDR-62001-2	5	100-240	85	120	Φ65*H25

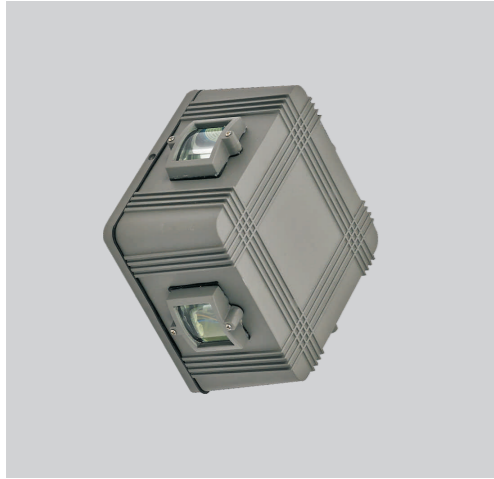
Order No.	Power(W)	Voltage(V)	CRI	Beam Angle(°)	SIZE(MM)
KDR-62001-3RD	5	100-240	85	120	Φ65*H34
KDR-62001-3SQ	5	100-240	85	120	65*65*H34



- Surface mounted with high power LED
- Narrow Beam Angle
- Efficiency:85Lm/W
- Body of aluminium
- Luminaires are equipped with electronic driver

Order No.	Power(W)	Voltage(V)	CRI	Beam Angle(°)	SIZE(MM)
KDR-66001SP-2	2*1	100-240	85	3	85*85*H35
KDR-66001SP-3	3*1	100-240	85	3	85*85*H35
KDR-66001SP-4	4*1	100-240	85	3	85*85*H35

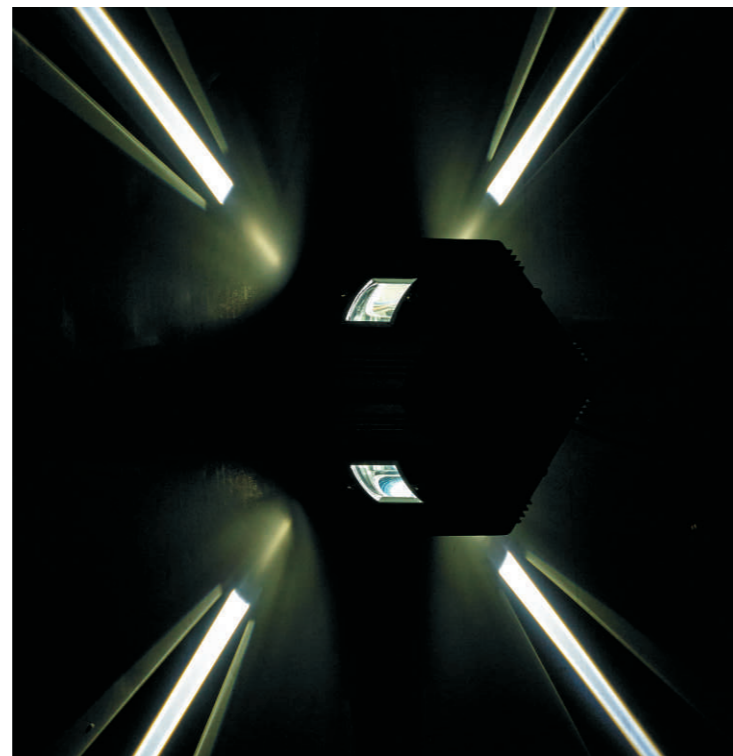




- Surface mounted with high power LED
- Narrow Beam Angle
- Body of aluminium die casting

- Luminaires are equipped with electronic driver

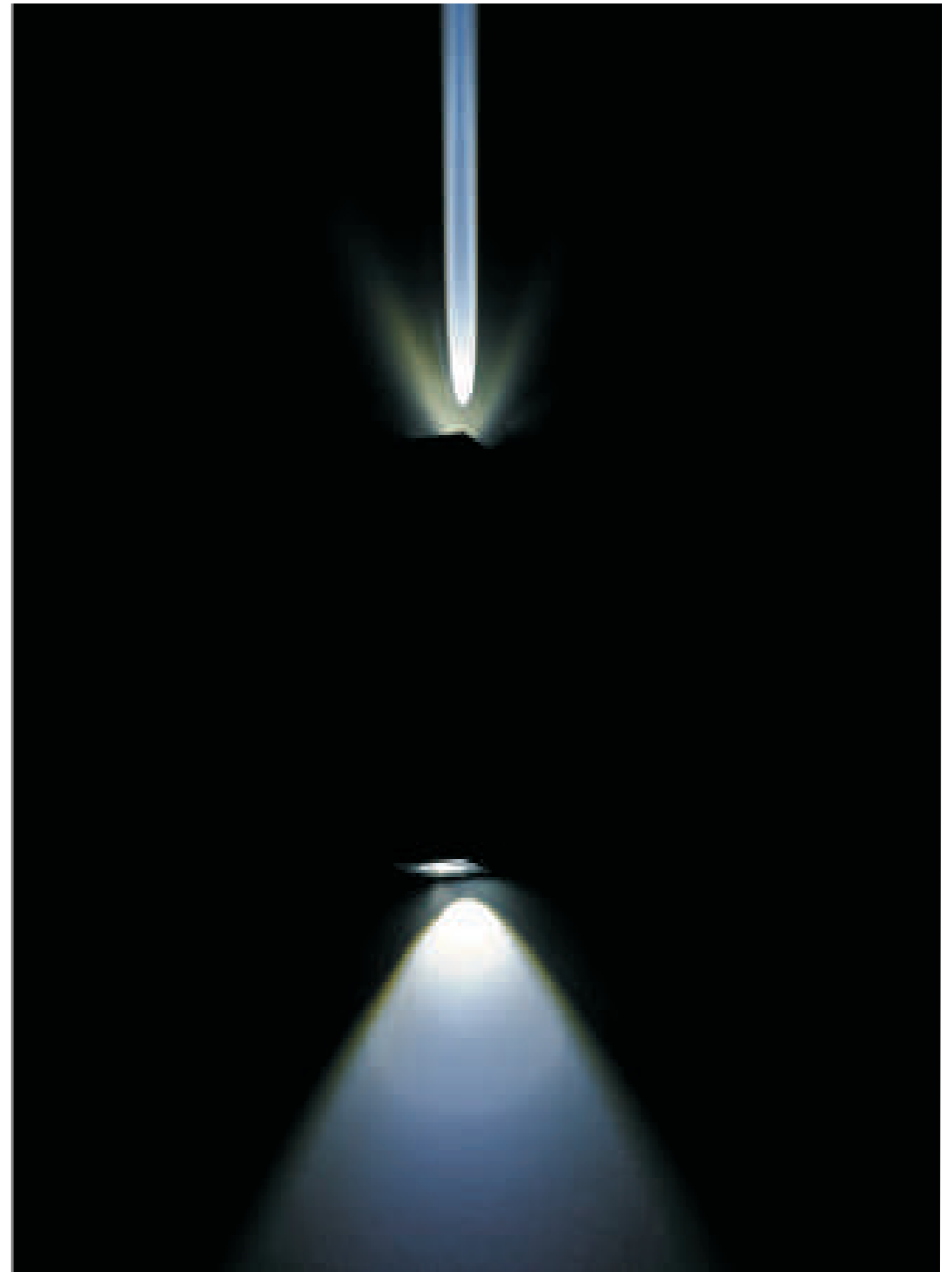
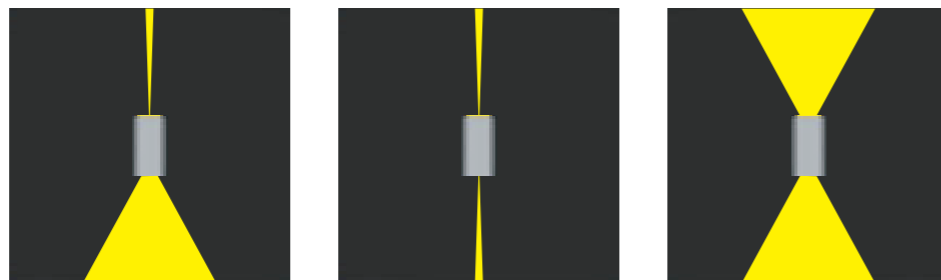
Order No.	Power(W)	Voltage(V)	CRI	Beam Angle(°)	SIZE(MM)
KDR-66019S	4*1	100-240	85	3	80*80*H78
KDR-66019B	4*2	100-240	85	3	200*200*H125

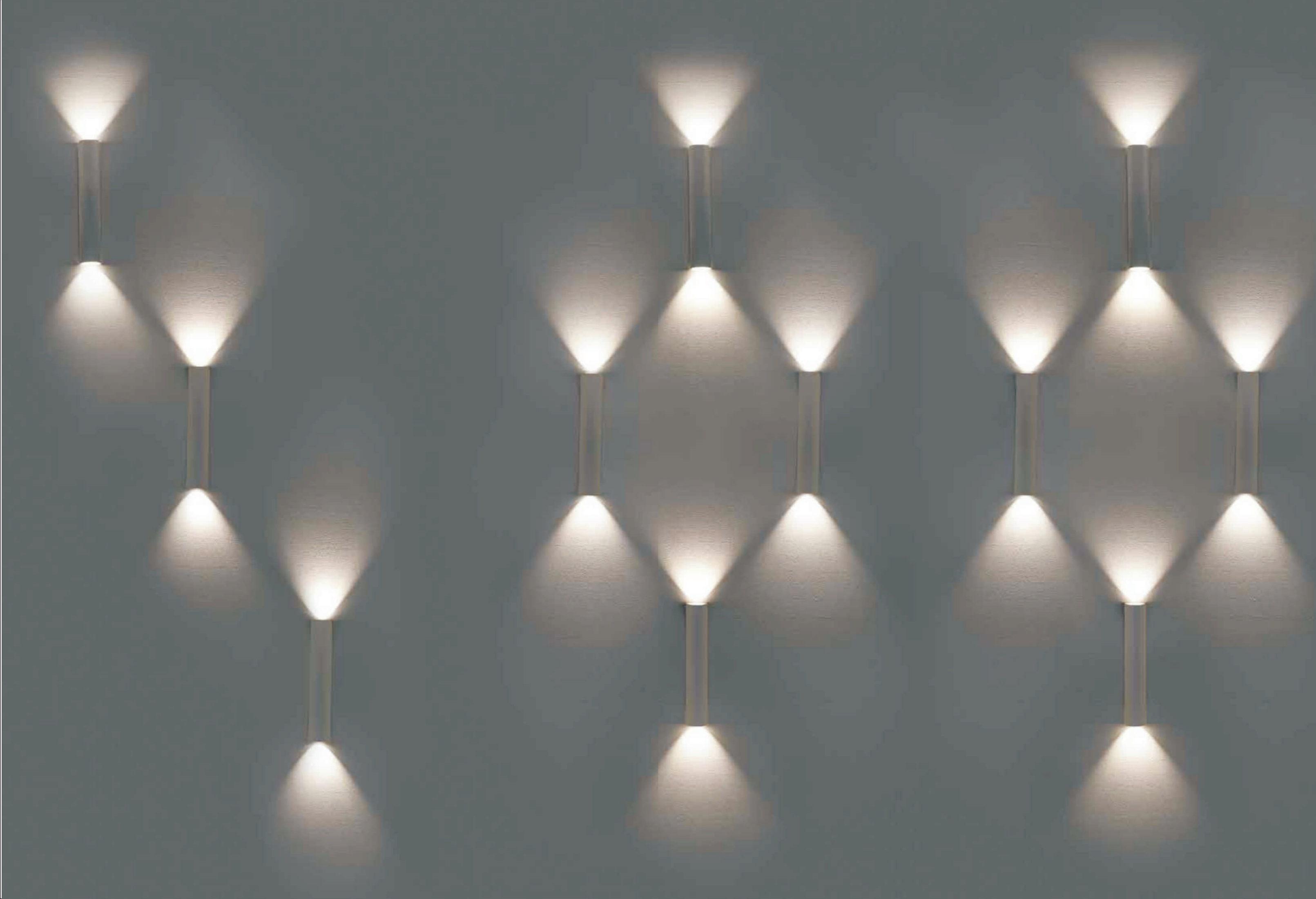


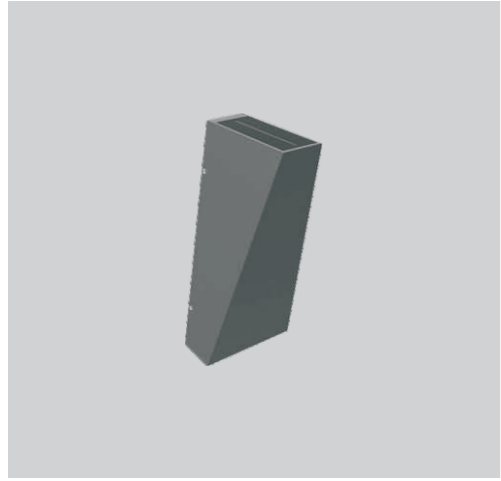


- Surface mounted with high power LED
- Wide Beam Angle
- Efficiency:85Lm/W
- Body of aluminium
- Luminaires are equipped with electronic driver

Order No.	Power(W)	Voltage(V)	CRI	Beam Angle(°)	SIZE(MM)
KDR-66030-1	2+2	100-240	85	3+60	30*30*180
KDR-66030-2	2+2	100-240	85	3+3	30*30*180
KDR-66030-3	2+2	100-240	85	60+60	30*30*180



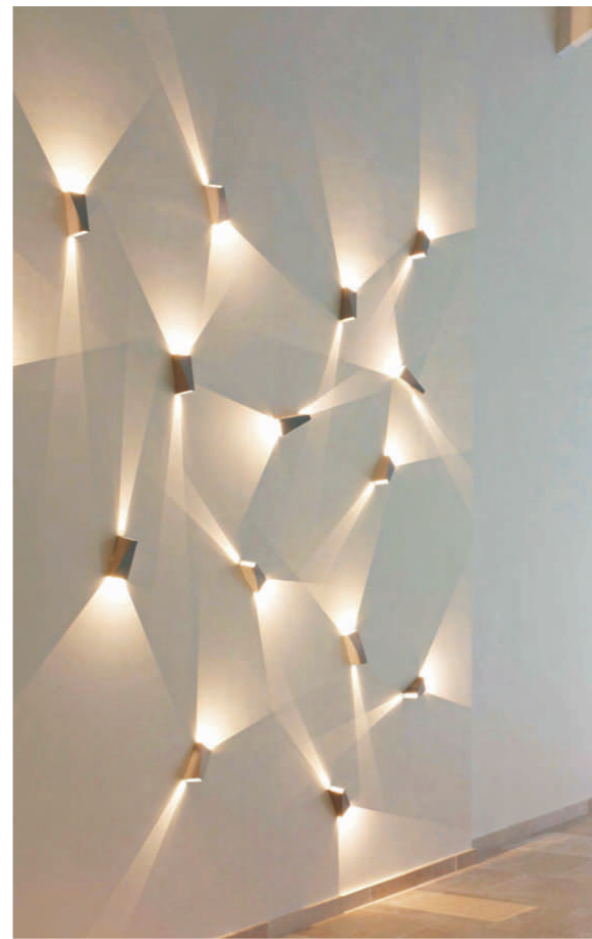


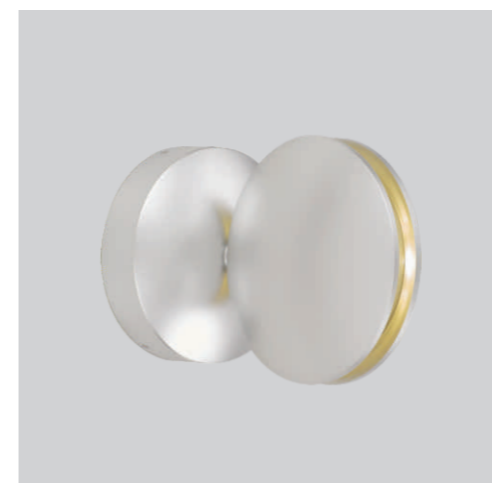


- Surface mounted with COB LED
- Narrow & wide Beam Angle
- Efficiency:85Lm/W
- Body of aluminium die casting
- Luminaires are equipped with electronic driver



Order No.	Power(W)	Voltage(V)	CRI	Beam Angle(°)	SIZE(MM)
KDR-66022	5+7	100-240	85	8+120	L85*W85*H200

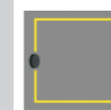




CREE

CE RoHS IP54

- Surface mounted with high power LED
- Narrow Beam Angle
- Efficiency:85Lm/W
- Body of aluminium
- Luminaires are equipped with electronic driver



360°

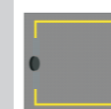
Order No.	Power(W)	Voltage(V)	CRI	Beam Angle(°)	SIZE(MM)
KDR-66032-1	3*1	100-240	85	Blade 360	Φ120*110*H163



CREE

CE RoHS IP54

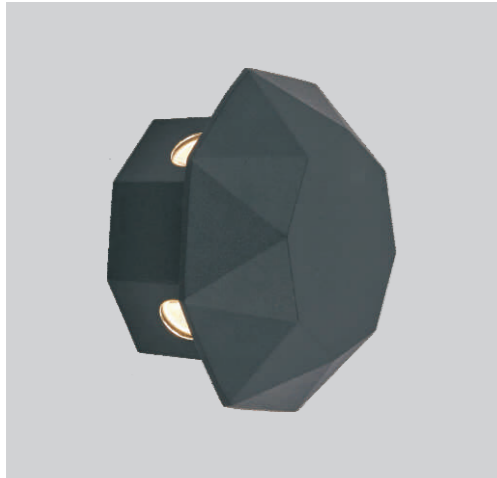
- Surface mounted with high power LED
- Narrow Beam Angle
- Efficiency:85Lm/W
- Body of aluminium
- Luminaires are equipped with electronic driver



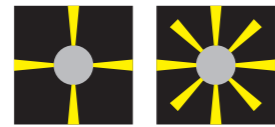
320°

Order No.	Power(W)	Voltage(V)	CRI	Beam Angle(°)	SIZE(MM)
KDR-66032-2	3*1	100-240	85	Blade 320	150*60*H100





- Surface mounted with high power LED
- Narrow Beam Angle
- Efficiency:85Lm/W
- Body of aluminium die casting
- Luminaires are equipped with electronic driver



Order No.	Power(W)	Voltage(V)	CRI	Beam Angle(°)	SIZE(MM)
KDR-68007-4	4*1	100-240	85	15	Φ125*H70
KDR-68007-8	8*1	100-240	85	15	Φ160*H85



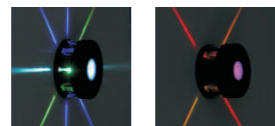
- Surface mounted with COB LED
- Wide Beam Angle
- Efficiency:85Lm/W
- Body of aluminium
- Luminaires are equipped with electronic driver



Order No.	Power(W)	Voltage(V)	CRI	Beam Angle(°)	SIZE(MM)
KDR-65006-1	7	100-240	85	-	Φ60*W100*H255
KDR-65006-2	2*7	100-240	85	-	Φ60*W100*H275



- Body:Made of high quality die-cast aluminum with treatment of corrosion protection and UV-proof powder coating.
- Diffuser:PMMA
- Gasketing:Made of thermostable silica gel to improve protection class.



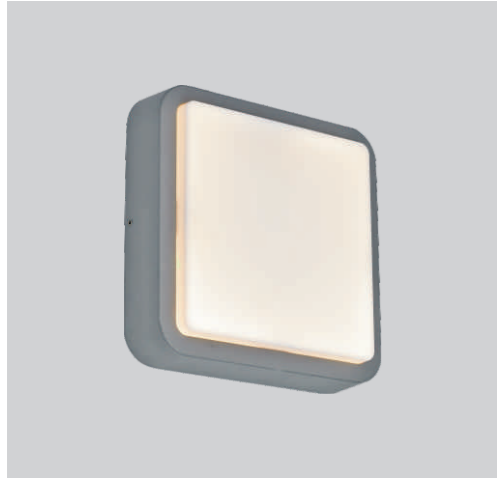
Order No.	Power(W)	Voltage(V)	CRI	Beam Angle(°)	SIZE(MM)
KDR-68008-4	13	100-240	85	3	Φ148*H90
KDR-68008-8	25	100-240	85	3	Φ192*H89



- Surface mounted with COB LED
- Wide Beam Angle
- Efficiency:85Lm/W
- Body of aluminium
- Luminaires are equipped with electronic driver

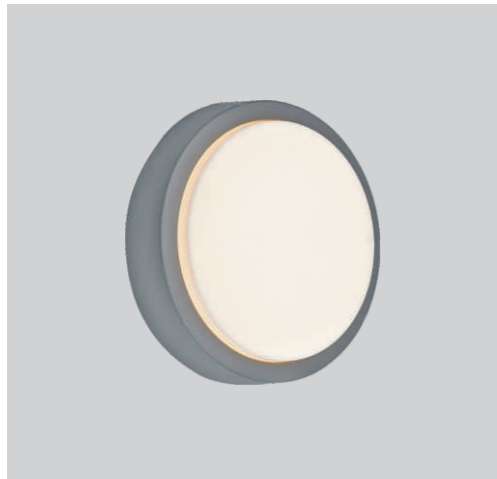


Order No.	Power(W)	Voltage(V)	CRI	Beam Angle(°)	SIZE(MM)
KDR-65006D-1	7	100-240	85	-	Φ60*W100*H170
KDR-65006D-2	2*7	100-240	85	-	Φ60*W100*H235



- Surface mounted with SMD LED
- Wide Beam Angle
- Efficiency:85Lm/W
- Body of aluminium die casting
- Luminaires are equipped with electronic driver

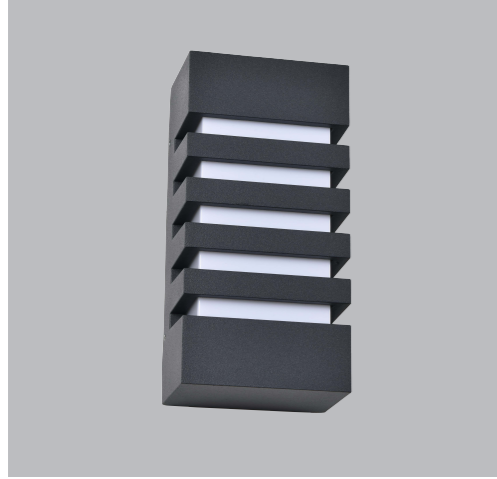
Order No.	Power(W)	Voltage(V)	CRI	Beam Angle(°)	SIZE(MM)
KDR-FC011S	10	100-240	85	180	200*200*H60
KDR-FC011L	20	100-240	85	180	280*280*H75



- Surface mounted with SMD LED
- Wide Beam Angle
- Efficiency:85Lm/W
- Body of aluminium die casting
- Luminaires are equipped with electronic driver

Order No.	Power(W)	Voltage(V)	CRI	Beam Angle(°)	SIZE(MM)
KDR-FC010S	10	100-240	85	180	Φ200*H60
KDR-FC010L	20	100-240	85	180	Φ280*H75





- Surface mounted with Low power SMD LED
- Wide Beam Angle
- Efficiency:85Lm/W
- Body of aluminium die casting
- Luminaires are equipped with electronic driver

Order No.	Power(W)	Voltage(V)	CRI	Beam Angle(°)	SIZE(MM)
KDR-FC001	12	100-240	85	180	L175*W50*H270



- Surface mounted with Low power SMD LED
- Wide Beam Angle
- Efficiency:85Lm/W
- Body of aluminium die casting
- Luminaires are equipped with electronic driver



Order No.	Power(W)	Voltage(V)	CRI	Beam Angle(°)	SIZE(MM)
KDR-FC002	18	100-240	85	180	300*300*H100



- Surface mounted with Low power SMD LED
- Wide Beam Angle
- Efficiency:85Lm/W
- Body of aluminium die casting
- Luminaires are equipped with electronic driver

Order No.	Power(W)	Voltage(V)	CRI	Beam Angle(°)	尺寸 SIZE(MM)
KDR-FC003-S	12	100-240	85	180	Φ145*H65
KDR-FC003-B	15	100-240	85	180	Φ300*H90

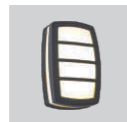


- Surface mounted with Low power SMD LED
- Wide Beam Angle
- Efficiency:85Lm/W
- Body of aluminium die casting
- Luminaires are equipped with electronic driver

Order No.	Power(W)	Voltage(V)	CRI	Beam Angle(°)	SIZE(MM)
KDR-FC007	10	100-240	85	85	L220*W130*H105



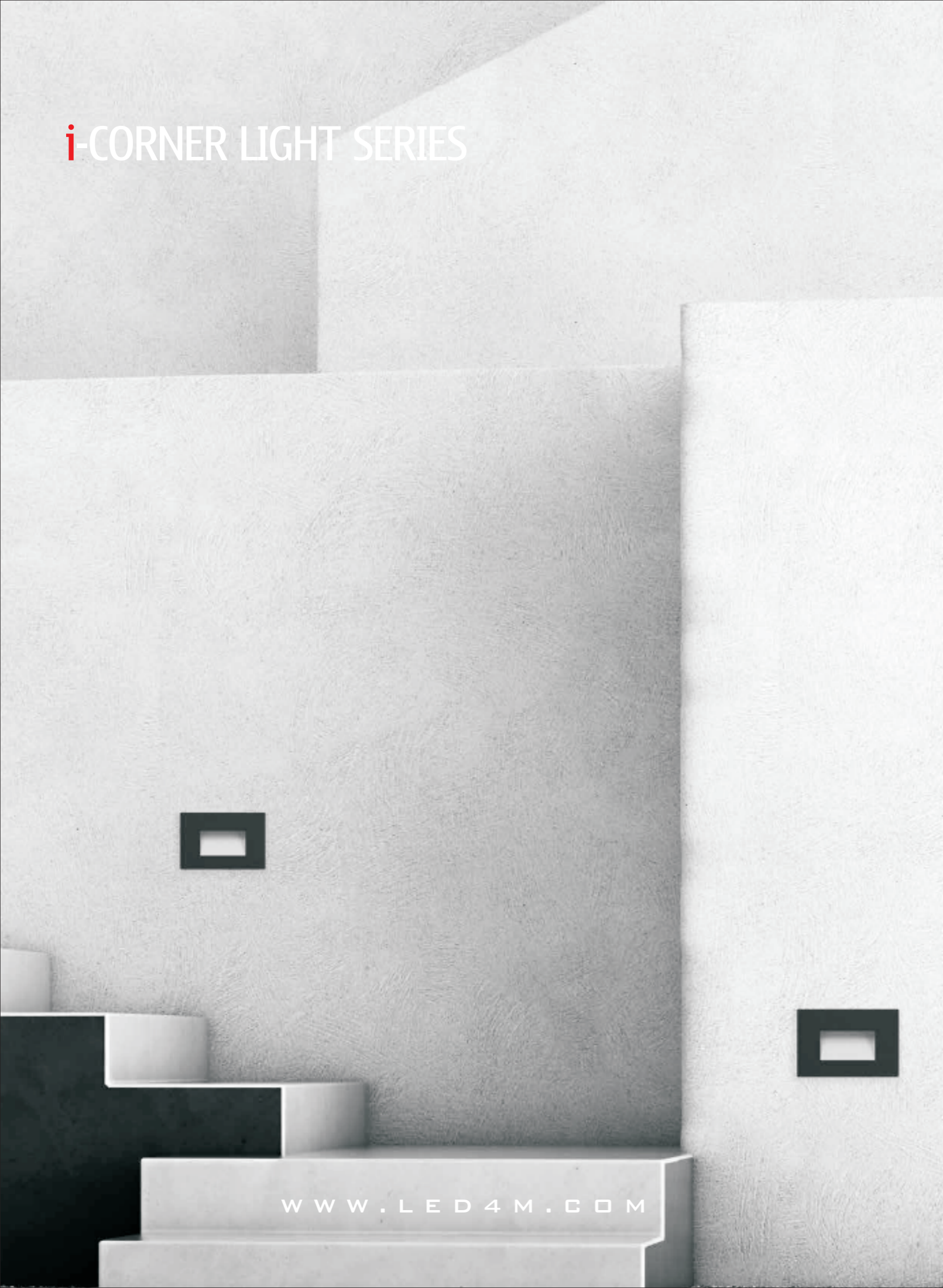
- Surface mounted with Low power SMD LED
- Wide Beam Angle
- Efficiency:85Lm/W
- Body of aluminium die casting
- Luminaires are equipped with electronic driver



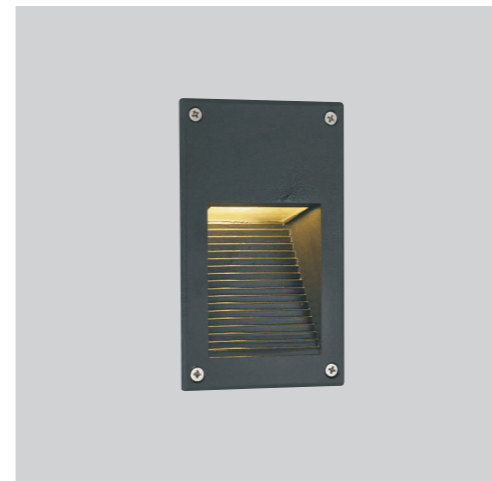
Order No.	Power(W)	Voltage(V)	CRI	Beam Angle(°)	SIZE(MM)
KDR-FC005	15	100-240	85	320	L150*W80*H250
KDR-FC006	15	100-240	85	320	L150*W80*H250



i-CORNER LIGHT SERIES

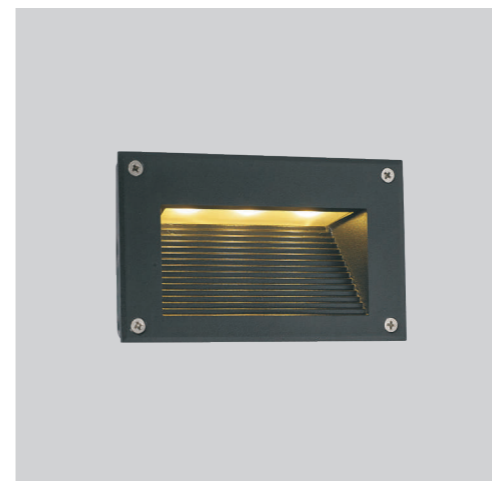


WWW.LED4M.COM



- Surface mounted with high power LED
- Wide Beam Angle
- Efficiency:85Lm/W
- Body of aluminium die casting
- Luminaires are equipped with electronic driver

Order No.	Power(W)	Voltage(V)	CRI	Beam Angle(°)	SIZE(MM)	CUT OUT(MM)
KDR-66001	6	100-240	85	N/A	162*100*H80	95*158



- Surface mounted with high power LED
- Wide Beam Angle
- Efficiency:85Lm/W
- Body of aluminium die casting
- Luminaires are equipped with electronic driver

Order No.	Power(W)	Voltage(V)	CRI	Beam Angle(°)	SIZE(MM)	CUT OUT(MM)
KDR-66002S	3	100-240	85	N/A	145*70*H50	141*68
KDR-66002B	6	100-240	85	N/A	162*100*H80	158*95



BRIDGELUX

CE RoHS IP65

- Surface mounted with high power LED
- Wide Beam Angle
- Efficiency:85Lm/W
- Body of aluminium
- Luminaires are equipped with electronic driver

Order No.	Power(W)	Voltage(V)	CRI	Beam Angle(°)	SIZE(MM)	CUT OUT(MM)
KDR-69011S	3	100-240	85	N/A	105*60*H55	103*57
KDR-69011L	3	100-240	85	N/A	210*60*H55	200*57

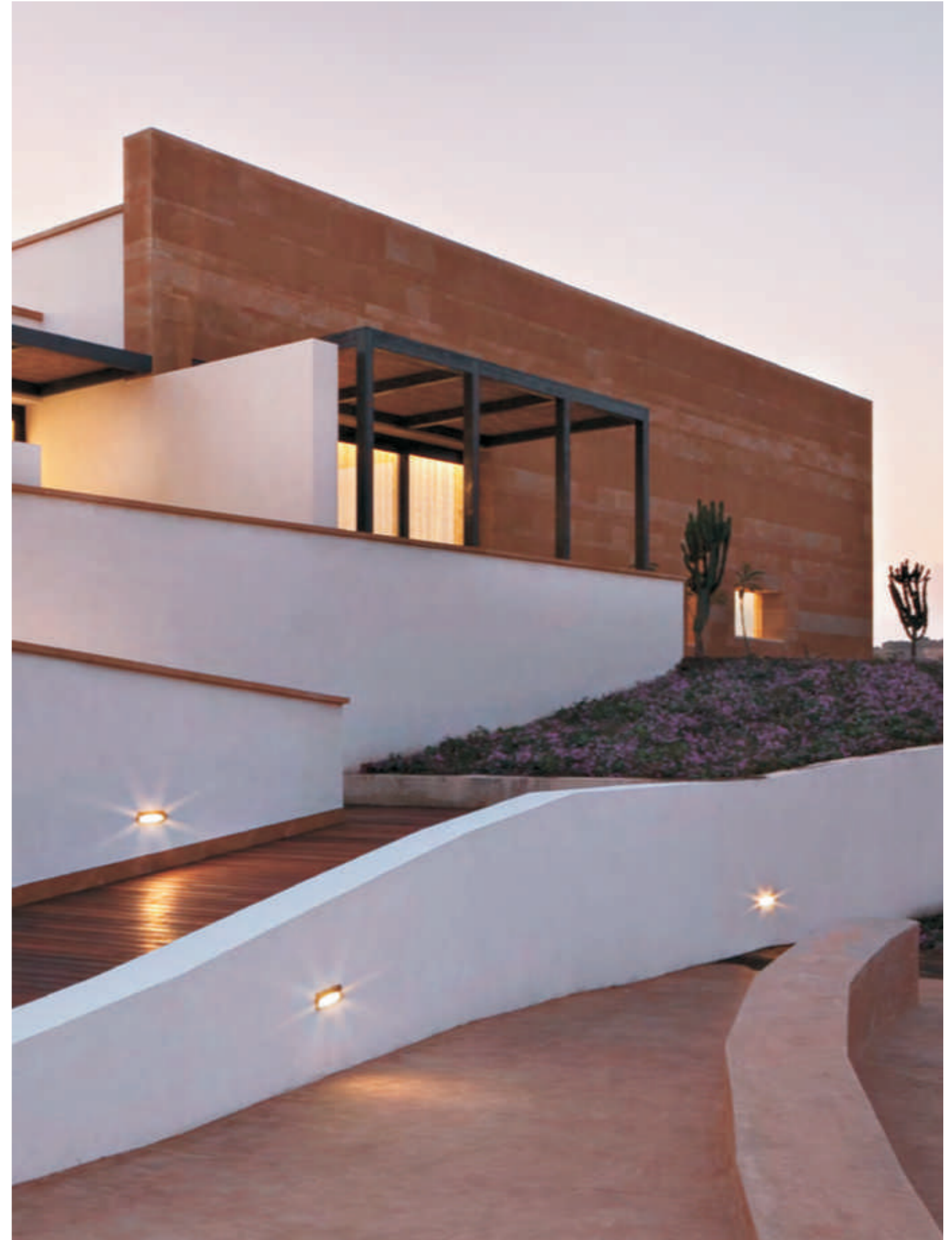


BRIDGELUX

CE RoHS IP65

- Surface mounted with high power LED
- Wide Beam Angle
- Efficiency:85Lm/W
- Body of aluminium die casting
- Luminaires are equipped with electronic driver

Order No.	Power(W)	Voltage(V)	CRI	Beam Angle(°)	SIZE(MM)	CUT OUT(MM)
KDR-69004S	3	100-240	85	N/A	105*60*H55	103*57
KDR-69004L	6	100-240	85	N/A	210*60*H55	200*57





- Surface mounted with high power LED
- Wide Beam Angle
- Efficiency:85Lm/W
- Body of aluminium die casting
- Luminaires are equipped with electronic driver

Order No.	Power(W)	Voltage(V)	CRI	Beam Angle(°)	SIZE(MM)	CUT OUT(MM)
KDR-QJ8484	3	100-240	85	N/A	84*84*H42	68*68

CITIZEN



- Surface mounted with high power LED
- Wide Beam Angle
- Efficiency:85Lm/W
- Body of aluminium die casting
- Luminaires are equipped with electronic driver

型号 Order No.	功率 Power(W)	电压 Voltage(V)	显指 CRI	光束角 Beam Angle(°)	尺寸 SIZE(MM)	开孔 CUT OUT(MM)
KDR-QJ8686	2	100-240	85	N/A	90*90*H30	86*86



- Surface mounted with high power LED
- Wide Beam Angle
- Efficiency:85Lm/W
- Body of aluminium
- Luminaires are equipped with electronic driver

Order No.	Power(W)	Voltage(V)	CRI	Beam Angle(°)	SIZE(MM)	CUT OUT(MM)
KDR-W01SQ-L	1*3	100-240	85	12	80*80*H75	35*60
KDR-W01SQ-S	1*3	100-240	85	12	55*55*H32	Φ45
KDR-W02RD-L	1*3	100-240	85	12	Φ80*H75	35*60
KDR-W02RD-S	1*3	100-240	85	12	Φ55*H32	Φ45

- Surface mounted with high power LED
- Wide Beam Angle
- Efficiency:85Lm/W
- Body of aluminium
- Luminaires are equipped with electronic driver



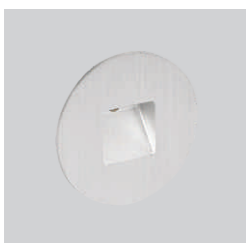
Order No.	Power(W)	Voltage(V)	CRI	Beam Angle(°)	SIZE(MM)	CUT OUT(MM)
KDR-W07	3	100-240	85	10	60*60*H40	Φ45



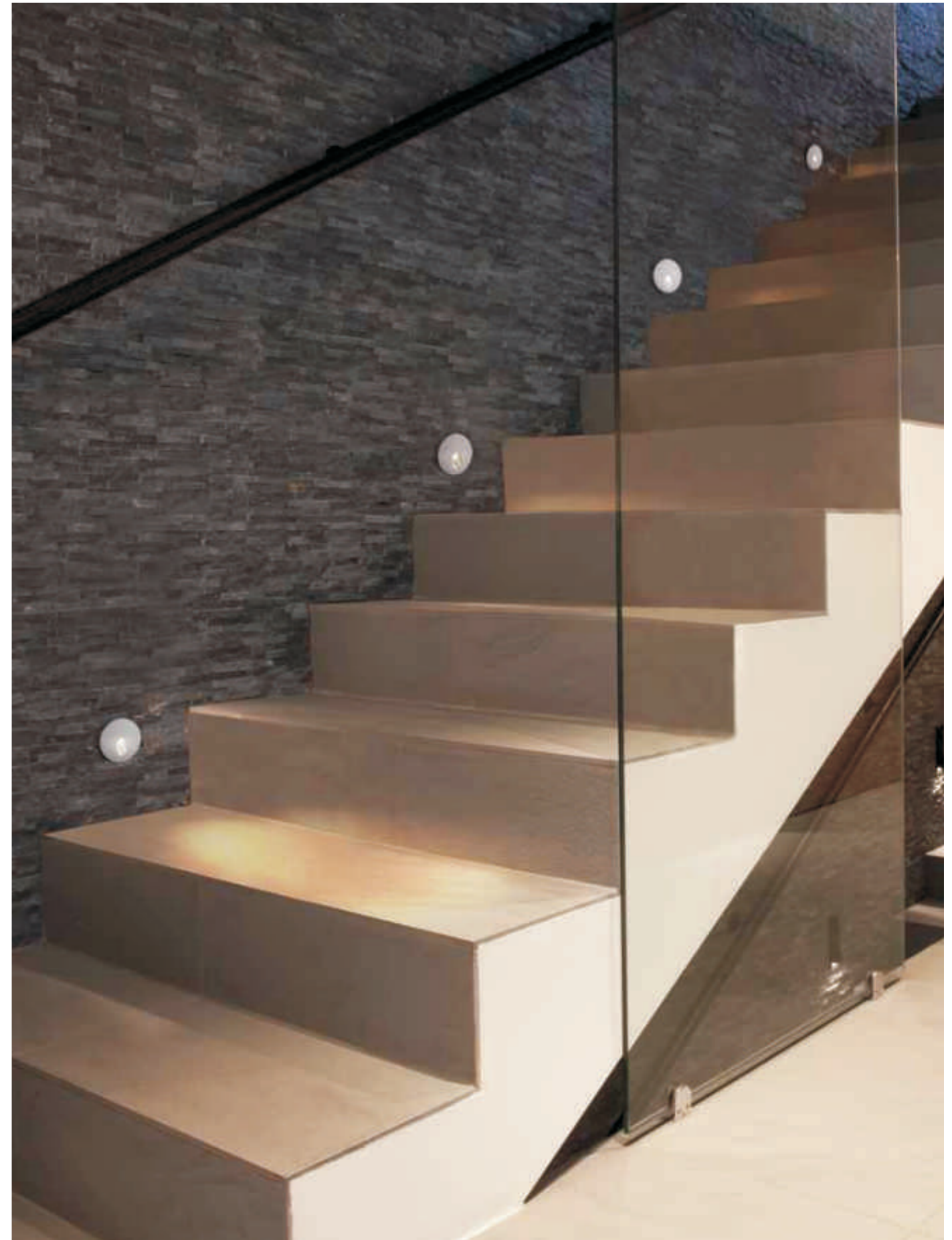
Order No.	Power(W)	Voltage(V)	CRI	Beam Angle(°)	SIZE(MM)	CUT OUT(MM)
KDR-W010S	3	100-240	85	8	45*45*H25	Φ38
KDR-W010B	3	100-240	85	8	70*70*H40	Φ45



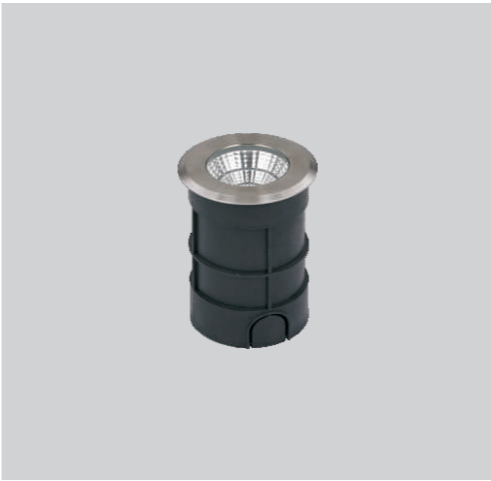
Order No.	Power(W)	Voltage(V)	CRI	Beam Angle(°)	SIZE(MM)	CUT OUT(MM)
KDR-W011-1	1*3	100-240	85	30	Φ65*H21	Φ38



Order No.	Power(W)	Voltage(V)	CRI	Beam Angle(°)	SIZE(MM)	CUT OUT(MM)
KDR-W011-2	1*3	100-240	85	30	Φ65*H21	Φ38



i-UNDERGROUND LIGHT SERIES



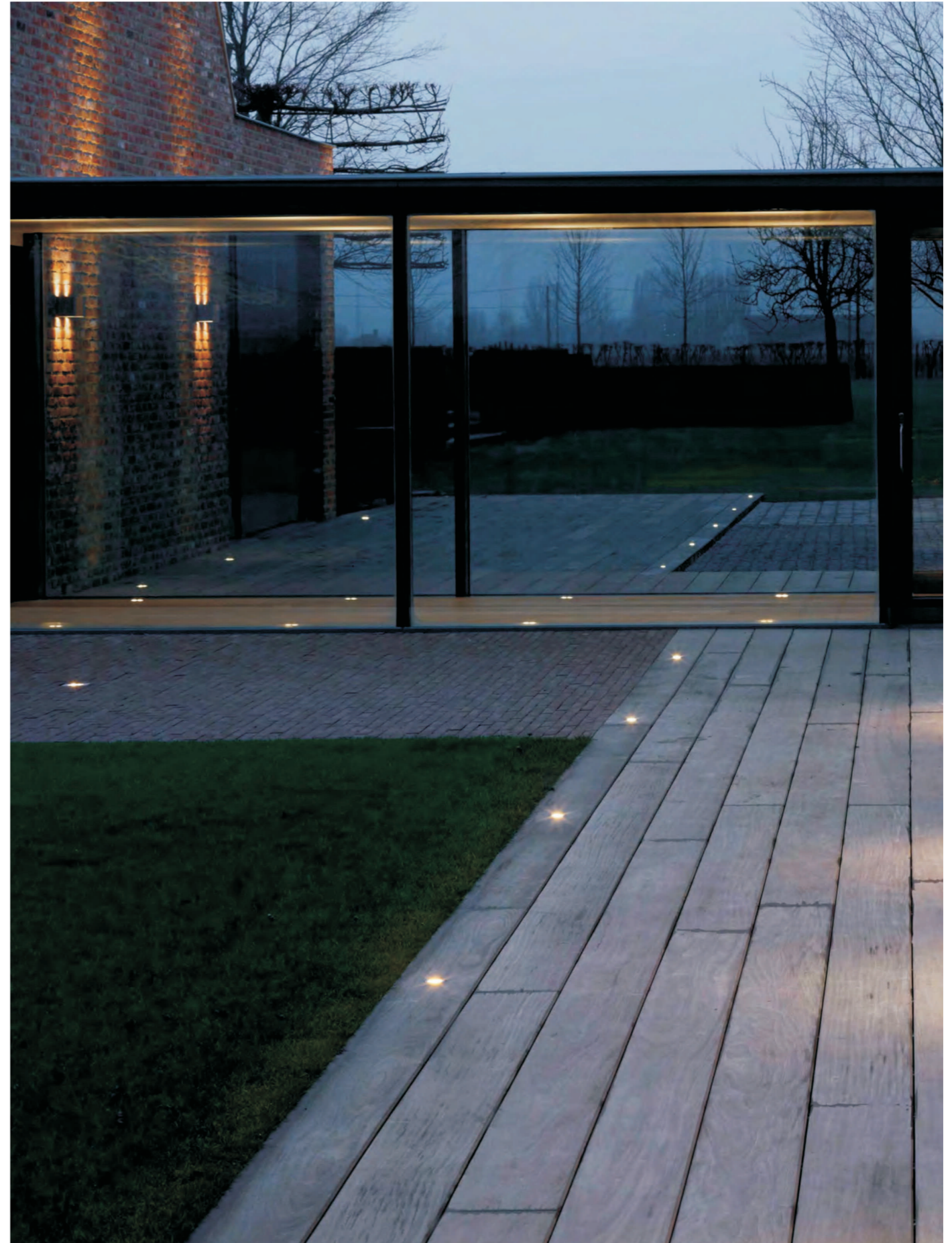
- Surface mounted with COB LED
- Narrow Beam Angle
- Efficiency:85Lm/W
- Body of stainless steel
- Luminaires are equipped with electronic driver

Order No.	Power(W)	Voltage(V)	CRI	Beam Angle(°)	SIZE(MM)	CUT OUT(MM)
KDR-64002-H52	1	100-240	85	120	Φ52*H88	Φ49
KDR-64002-C52	3	100-240	85	15/30	Φ52*H88	Φ49
KDR-64002-C62	3	100-240	85	15/30	Φ62*H88	Φ59
KDR-64002-C75	5	100-240	85	15/30	Φ75*H95	Φ70



- Surface mounted with COB LED
- Narrow Beam Angle
- Efficiency:85Lm/W
- Body of stainless steel & aluminium die casting
- Luminaires are equipped with electronic driver

Order No.	Power(W)	Voltage(V)	CRI	Beam Angle(°)	SIZE(MM)	CUT OUT(MM)
KDR-64002-C100	5	100-240	85	15/30	Φ100*H90	Φ90
KDR-64002-C120	9	100-240	85	15/30	Φ120*H125	Φ110
KDR-64002-C150	15	100-240	85	15/30	Φ150*H160	Φ140



- Surface mounted with high power LED
- Narrow Beam Angle
- Efficiency:85Lm/W
- Body of stainless steel
- Luminaires are equipped with electronic driver

Order No.	Power(W)	Voltage(V)	CRI	Beam Angle(°)	SIZE(MM)	CUT OUT(MM)
KDR-640025Q-H42	1*1	100-240	85	25	42*42*H70	Φ38
KDR-640025Q-H52	1*3	100-240	85	25	52*52*H80	Φ48
KDR-640025Q-C62	COB 3	100-240	85	25	62*62*H90	Φ55



CREE

CE | RoHS | IP65 |



- Surface mounted with COB LED
- Narrow Beam Angle
- Efficiency:85Lm/W
- Body of stainless steel & aluminium die casting
- Luminaires are equipped with electronic driver



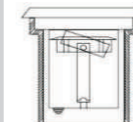
Order No.	Power(W)	Voltage(V)	CRI	Beam Angle(°)	SIZE(MM)	CUT OUT(MM)
KDR-64008R	40	100-240	85	8	Φ210*H275	Φ200

CREE

CE | RoHS | IP65 |



- Surface mounted with high COB LED
- Narrow Beam Angle
- Efficiency:85Lm/W
- Body of stainless steel & aluminium die casting
- Luminaires are equipped with electronic driver



Order No.	Power(W)	Voltage(V)	CRI	Beam Angle(°)	SIZE(MM)	CUT OUT(MM)
KDR-64009T	24	100-240	85	15/25	Φ200*H220	Φ195



- Surface mounted with high power LED
- Narrow Beam Angle
- Efficiency:85Lm/W
- Body of stainless steel & aluminium die casting
- Luminaires are equipped with electronic driver

Order No.	Power(W)	Voltage(V)	CRI	Beam Angle(°)	SIZE(MM)	CUT OUT(MM)
KDR-64002-3	3*1	100-240	85	15/30	Φ100*H90	Φ85
KDR-64002-6	6*1	100-240	85	15/30	Φ150*H90	Φ145
KDR-64002-9	9*1	100-240	85	15/30	Φ160*H90	Φ155
KDR-64002-12	12*1	100-240	85	15/30	Φ180*H90	Φ175
KDR-64002-15	15*1	100-240	85	15/30	Φ200*H90	Φ195



- Surface mounted with high power LED
- Narrow Beam Angle
- Efficiency:85Lm/W
- Body of stainless steel & aluminium die casting
- Luminaires are equipped with electronic driver

Order No.	Power(W)	Voltage(V)	CRI	Beam Angle(°)	SIZE(MM)	CUT OUT(MM)
KDR-64007-4	4*1	100-240	85	15/30	95*95*H90	90*90
KDR-64007-6	6*1	100-240	85	15/30	140*140*H90	135*135
KDR-64007-9	9*1	100-240	85	15/30	160*160*H90	155*155



- Surface mounted with high power LED
- Narrow Beam Angle
- Efficiency:85Lm/W
- Body of stainless steel & aluminium die casting
- Luminaires are equipped with electronic driver



Order No.	Power(W)	Voltage(V)	CRI	Beam Angle(°)	SIZE(MM)	CUT OUT(MM)
KDR-64015-03	6*1	100-240	85	15/30	300*90*H60	285*80
KDR-64015-05	9*1	100-240	85	15/30	500*90*H75	485*80
KDR-64015-06	12*1	100-240	85	15/30	600*90*H75	585*80
KDR-64015-10	15*1	100-240	85	15/30	1000*90*H80	985*80

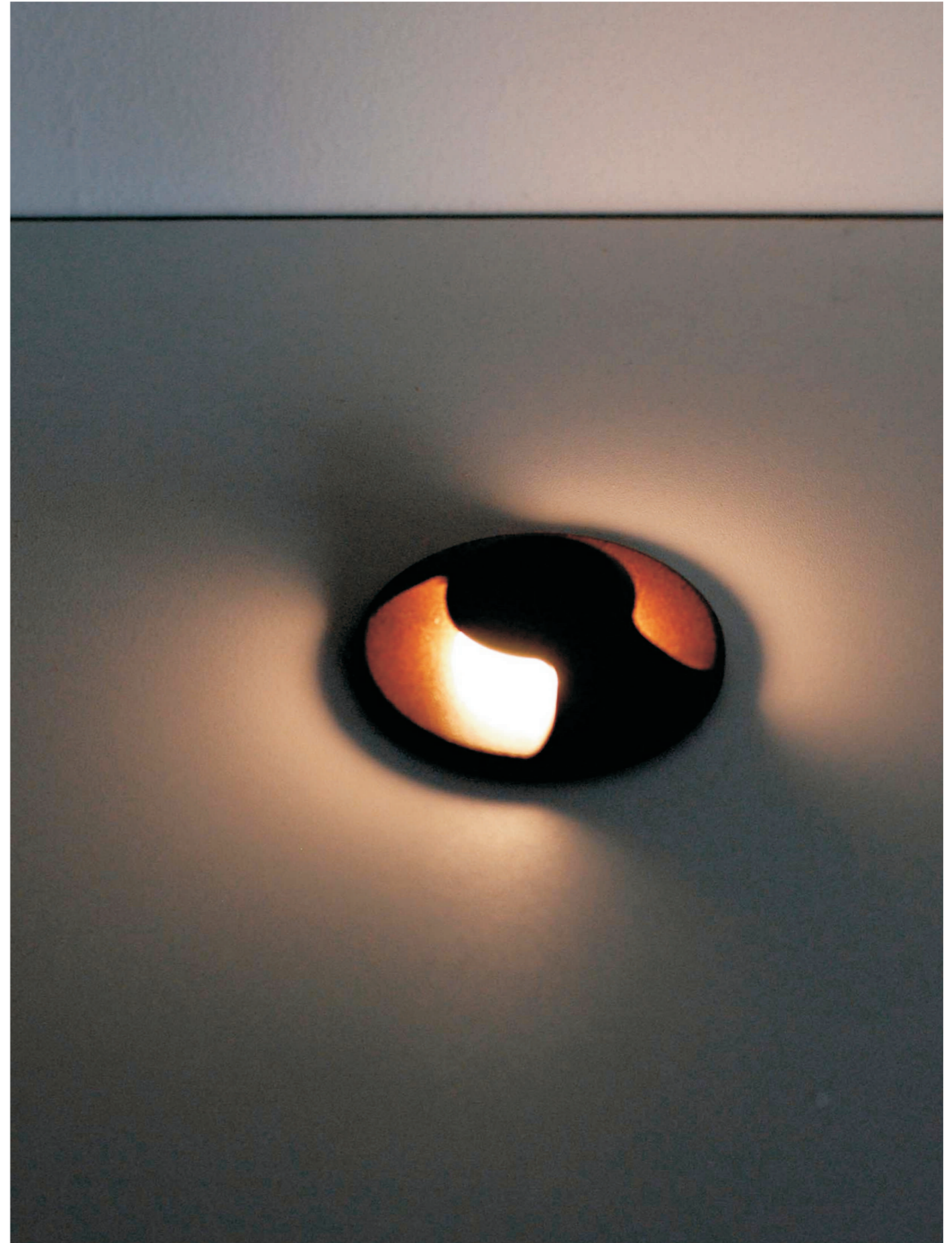




- Surface mounted with high power LED
- Narrow Beam Angle
- Efficiency:85Lm/W
- Body of aluminium
- Luminaires are equipped with electronic driver



Order No.	Power(W)	Voltage(V)	CRI	Beam Angle(°)	SIZE(MM)	CUT OUT(MM)
KDR-64014-1~4	1*3	100-240	85	N/A	Φ52*H93	Φ49
KDR-64016-1~4	1*3	100-240	85	N/A	Φ62*H102	Φ59

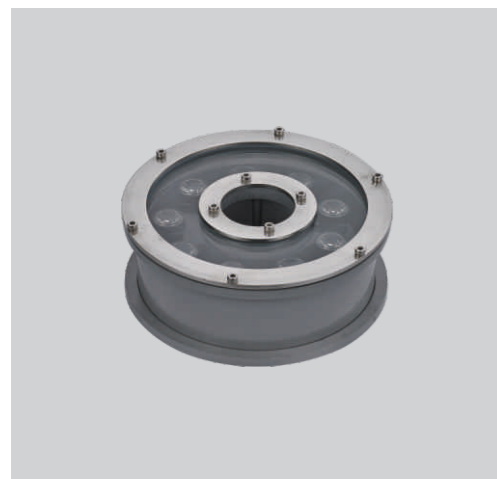


i-UNDERWATER LIGHT SERIES



- 采用大功率的LED光源
- Surface mounted with high power LED
- 窄光束角
- Narrow Beam Angle
- 光效: 85Lm/W
- Efficiency:85Lm/W
- 主体使用不锈钢
- Body of stainless steel
- 配备LED电子驱动器
- Luminaires are equipped with electronic driver

Order No.	Power(W)	Voltage(V)	CRI	Beam Angle(°)	SIZE(MM)
KDR-63005-3	3*1	100-240	85	15/30	Φ82*90*H150
KDR-63005-6	6*1	100-240	85	15/30	Φ120*90*H150
KDR-63005-9	9*1	100-240	85	15/30	Φ145*90*H180
KDR-63005-12	12*1	100-240	85	15/30	Φ160*90*H210
KDR-63005-15	15*1	100-240	85	15/30	Φ200*90*H210



- Surface mounted with high power LED
- Narrow Beam Angle
- Efficiency:85Lm/W
- Body of stainless steel & aluminium die casting
- Luminaires are equipped with electronic driver

Order No.	Power(W)	Voltage(V)	CRI	Beam Angle(°)	SIZE(MM)
KDR-63006-9	9*1	100-240	85	15/30	Φ162*H90
KDR-63006-12	12*1	100-240	85	15/30	Φ180*H90



- Surface mounted with high power LED
- Narrow Beam Angle
- Efficiency:85Lm/W
- Body of stainless steel
- Luminaires are equipped with electronic driver

Order No.	Power(W)	Voltage(V)	CRI	Beam Angle(°)	SIZE(MM)	CUT OUT(MM)
KDR-63005R-3	3*1	100-240	85	15/30	Φ100*H75	Φ90
KDR-63005R-6	6*1	100-240	85	15/30	Φ130*H75	Φ125
KDR-63005R-9	9*1	100-240	85	15/30	Φ152*H75	Φ145

i-OUTDOOR SPOTLIGHT SERIES



- 采用大功率的COB光源
- Surface mounted with COB LED
- 窄光束角
- Narrow Beam Angle
- 光效: 85Lm/W
- Efficiency:85Lm/W
- 主体使用不锈钢和压铸铝
- Body of stainless steel & aluminium die casting
- 配备LED电子驱动器
- Luminaires are equipped with electronic driver

Order No.	Power(W)	Voltage(V)	CRI	Beam Angle(°)	SIZE(MM)
KDR-63022	10	100-240	85	30	Φ100*150



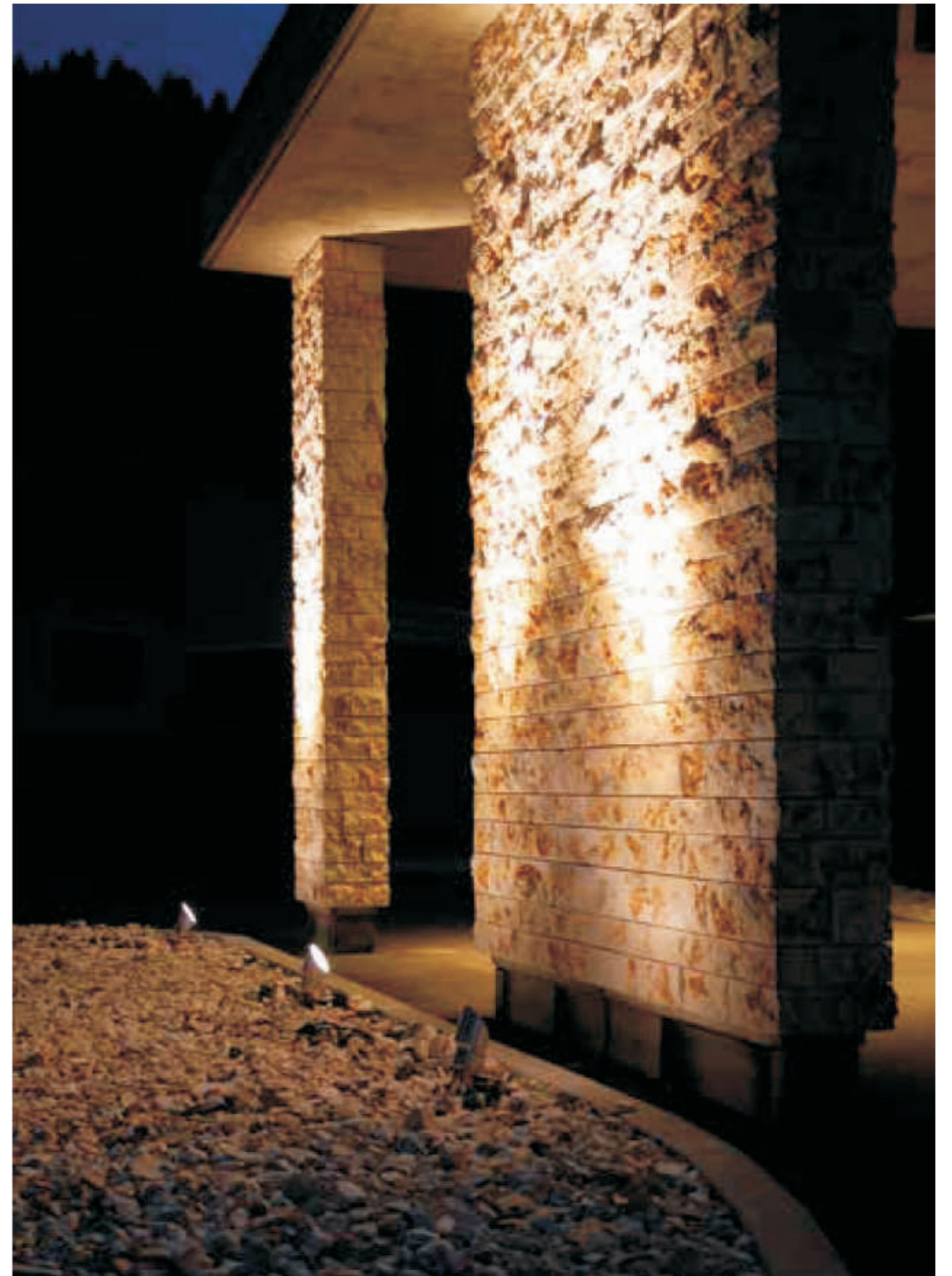
- Surface mounted with COB LED
- Narrow Beam AngleEfficiency:85Lm/W
- Body of stainless steel & aluminium die casting
- Luminaires are equipped with electronic driver

Order No.	Power(W)	Voltage(V)	CRI	Beam Angle(°)	SIZE(MM)
KDR-64008	40	100-240	85	85	Φ210*275



- Surface mounted with COB LED
- Narrow Beam Angle
- Efficiency:85Lm/W
- Body of aluminium
- Luminaires are equipped with electronic driver

Order No.	Power(W)	Voltage(V)	CRI	Beam Angle(°)	SIZE(MM)
KDR-63018-5	5	100-240	85	15/25	Φ42*L90
KDR-63018-7	7	100-240	85	15/25	Φ60*L140
KDR-63018-15	15	100-240	85	15/25	Φ75*L155
KDR-63018-20	20	100-240	85	15/25	Φ90*L190
KDR-63018-25	25	100-240	85	15/25	Φ105*L200



i-FLOOD LIGHT SERIES



WWW.LED4M.COM



- Surface mounted with high power LED
- Narrow Beam Angle
- Efficiency:85Lm/W
- Body of aluminium die casting
- Luminaires are equipped with electronic driver



Order No.	Power(W)	Voltage(V)	CRI	Beam Angle(°)	SIZE(MM)
KDR-WT001S	36*1	100-240	85	15/30	Φ220*250*260
KDR-WT001B	60*1	100-240	85	15/30	Φ270*330*350



- Surface mounted with high power LED
- Narrow Beam Angle
- Efficiency:85Lm/W
- Body of aluminium die casting
- Luminaires are equipped with electronic driver



Order No.	Power(W)	Voltage(V)	CRI	Beam Angle(°)	SIZE(MM)
KDR-WT002S	36*1	100-240	85	15/30	Φ190*220
KDR-WT002B	54*1	100-240	85	15/30	Φ240*235



CE RoHS IP65

- Surface mounted with COB LED
- Wide Beam Angle
- Efficiency:85Lm/W
- Body of aluminium die casting
- Luminaires are equipped with electronic driver



Order No.	Power(W)	Voltage(V)	CRI	Beam Angle(°)	SIZE(MM)
KDR-63004-200W	4*50	100-240	85	120	450*380*110



CE RoHS IP65

- Surface mounted with COB LED
- Wide Beam Angle
- Efficiency:85Lm/W
- Body of aluminium die casting
- Luminaires are equipped with electronic driver



Order No.	Power(W)	Voltage(V)	CRI	Beam Angle(°)	SIZE(MM)
KDR-63004-50W	50	100-240	85	120	240*185*80



Order No.	Power(W)	Voltage(V)	CRI	Beam Angle(°)	SIZE(MM)
KDR-63004-100W	2*50	100-240	85	120	370*310*90



Order No.	Power(W)	Voltage(V)	CRI	Beam Angle(°)	SIZE(MM)
KDR-63004-150W	3*50	100-240	85	120	371*291*105



- Surface mounted with SMD LED
- Wide Beam Angle
- Efficiency:85Lm/W
- Body of aluminium die casting
- Luminaires are equipped with electronic driver

Order No.	Power(W)	Voltage(V)	CRI	Beam Angle(°)	SIZE(MM)
KDR-63009-10W	SMD 10	100-240	85	120	130*110*40
KDR-63009-20W	SMD 20	100-240	85	120	180*150*50
KDR-63009-30W	SMD 30	100-240	85	120	225*190*60
KDR-63009-50W	SMD 50	100-240	85	120	280*235*70



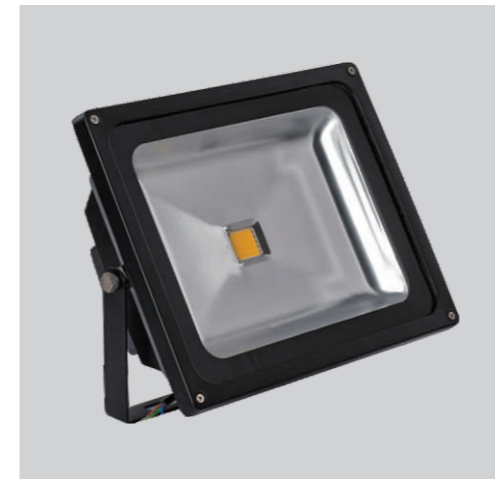
- Surface mounted with COB LED
- Wide Beam Angle
- Efficiency:85Lm/W
- Body of aluminium die casting
- Luminaires are equipped with electronic driver

型号 Order No.	功率 Power(W)	电压 Voltage(V)	显指 CRI	光束角 Beam Angle(°)	尺寸 SIZE(MM)
KDR-63006-50W	50	100-240	85	9/15/90	284*138*235
KDR-63006-100W	2*50	100-240	85	9/15/90	284*140*260
KDR-63006-150W	3*50	100-240	85	15/90	400*300*180
KDR-63006-200W	4*50	100-240	85	15/90	400*360*180



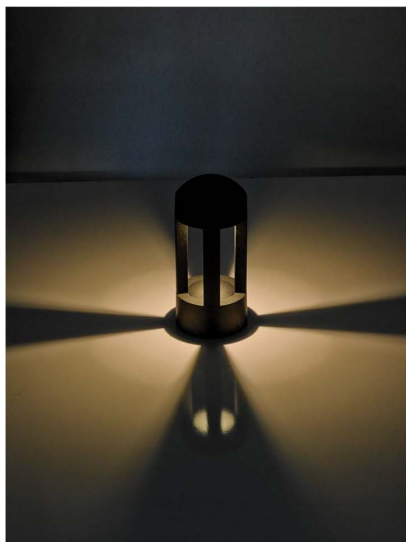
- Surface mounted with COB LED
- Efficiency:85Lm/W
- Body of aluminium die casting
- Luminaires are equipped with electronic driver

Order No.	Power(W)	Voltage(V)	CRI	Beam Angle(°)	SIZE(MM)
KDR-63002-20W	20	100-240	85	120	300*250*80
KDR-63002-30W	30	100-240	85	120	300*250*80
KDR-63002-50W	50	100-240	85	120	360*340*100
KDR-63002-100W	50*2	100-240	85	120	450*410*130






- Surface mounted with COB LED
- Wide Beam Angle
- Efficiency:85Lm/W
- Body of aluminium die casting
- Luminaires are equipped with electronic driver

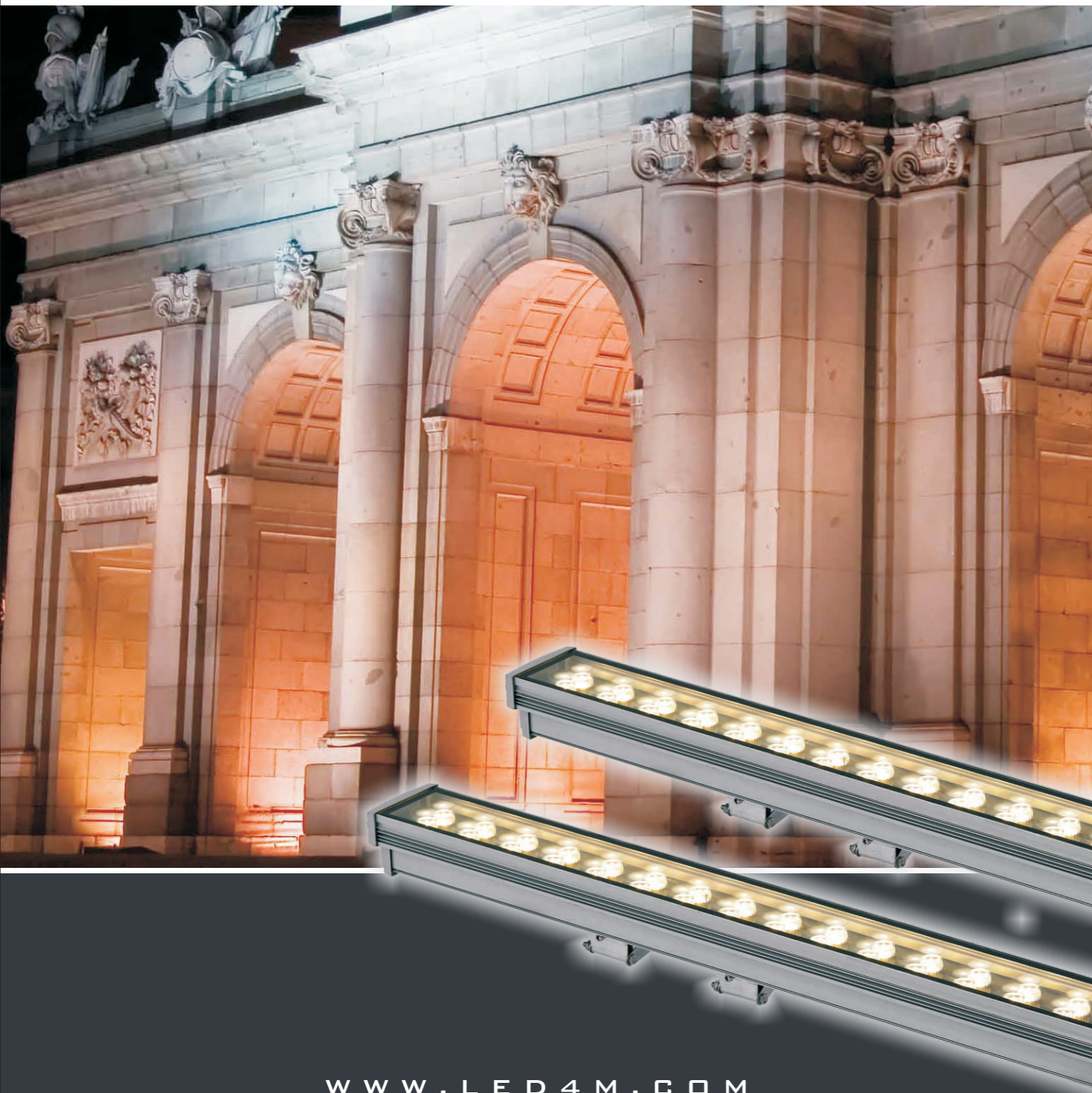
型号 Order No.	功率 Power(W)	电压 Voltage(V)	显指 CRI	光束角 Beam Angle(°)	尺寸 SIZE(MM)
KDR-63001-10W	10	100-240	85	120	115*85*80
KDR-63001-20W	20	100-240	85	120	180*140*100
KDR-63001-30W	30	100-240	85	120	225*185*130
KDR-63001-50W	50	100-240	85	120	288*238*150



- Surface mounted with COB LED
- Wide Beam Angle
- Efficiency: 85lm/W
- Body of aluminium die casting
- Luminaires are equipped with electronic driver

型号 Order No.	Power(W)	Voltage(V)	Beam Angle(°)	SIZE(MM)
 KDR-67023-2-H600		100-240	85	N/A Φ105*H600
 KDR-67023-4-H630		100-240	85	N/A Φ105*H630
 KDR-67023-4-H230		100-240	85	N/A Φ105*H230

i-LINEAR WALL WASHER LIGHT SERIES



- Surface mounted with high power LED
- Narrow Beam Angle
- Efficiency:85Lm/W
- Body of aluminium
- Luminaires are equipped with electronic driver

Order No.	Power(W)	Voltage(V)	CRI	Beam Angle(°)	SIZE(MM)
KDR-WL-09	9*2*2	100-240	85	15/30	500*95*65
KDR-WL-08	18*2*2	100-240	85	15/30	1000*95*75





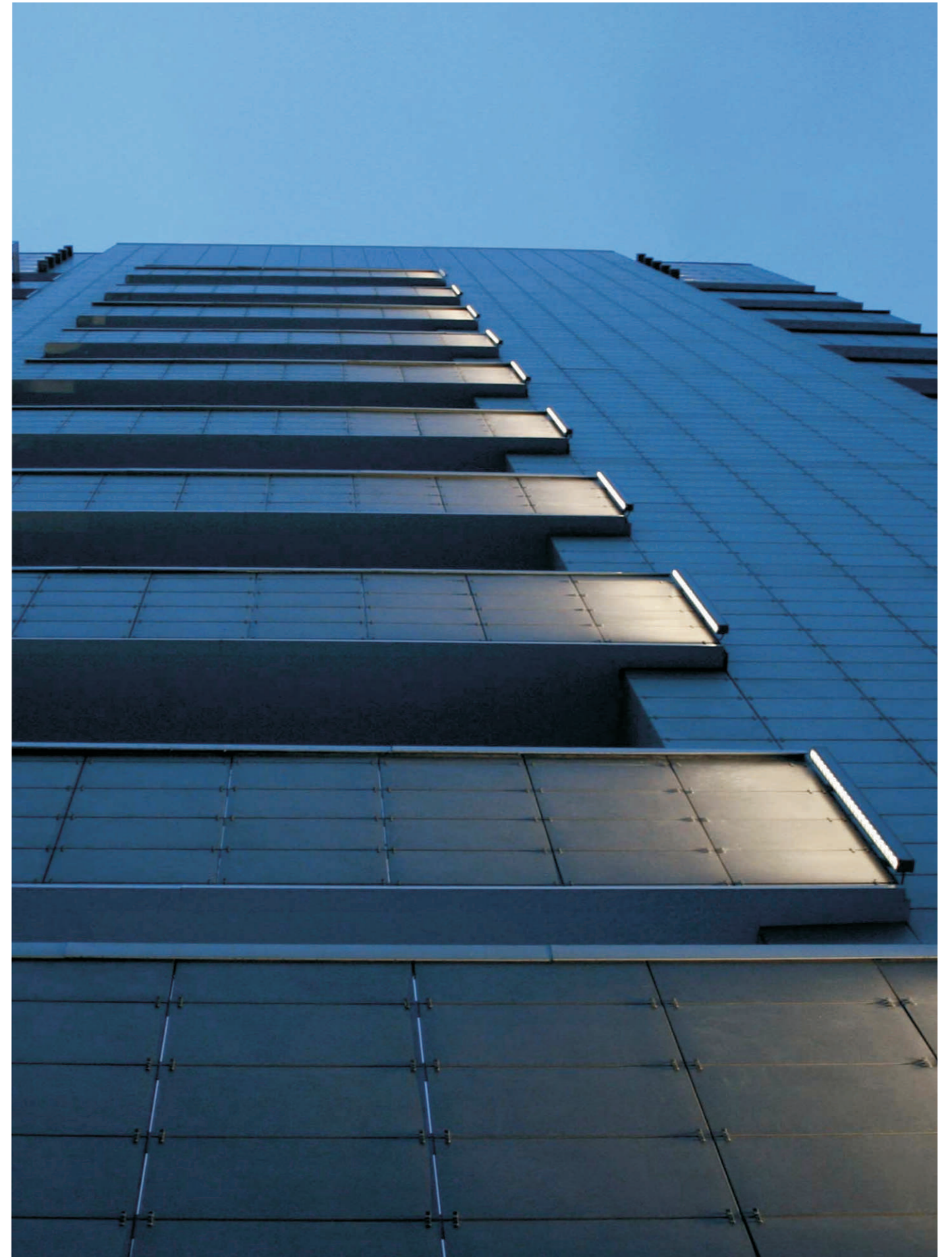
- Surface mounted with high power LED
- Narrow Beam Angle
- Efficiency:85Lm/W
- Body of aluminium
- Luminaires are equipped with electronic driver

Order No.	Power(W)	Voltage(V)	CRI	Beam Angle(°)	SIZE(MM)
KDR-WL-01	12*1	100-240	85	15/30	600*55*55
KDR-WL-02	12*1	100-240	85	15/30	1000*55*55
KDR-WL-03	18*1	100-240	85	15/30	1000*55*55
KDR-WL-04	24*1	100-240	85	15/30	1000*55*55
KDR-WL-05	18*1	100-240	85	15/30	1200*55*55
KDR-WL-06	24*1	100-240	85	15/30	1200*55*55



- Surface mounted with high power LED
- arrow Beam Angle
- Efficiency:85Lm/W
- Body of aluminium
- Luminaires are equipped with electronic driver

Order No.	Power(W)	Voltage(V)	CRI	Beam Angle(°)	SIZE(MM)
KDR-WLX-10	9*1	100-240	85	15/30	500*40*40
KDR-WLX-11	18*1	100-240	85	15/30	1000*40*40



i-HIGHBAY LIGHT SERIES



- Surface mounted with high power LED
- Wide Beam Angle
- Efficiency:85lm/W
- Body of aluminium
- Luminaires are equipped with electronic driver

APPLICATION SITE

Apply to factory, workshop, warehouse, waiting room, gymnasium, station, oil station, airport, shopping malls, supermarkets and other large spacious place lighting

PRODUCT FEATURES



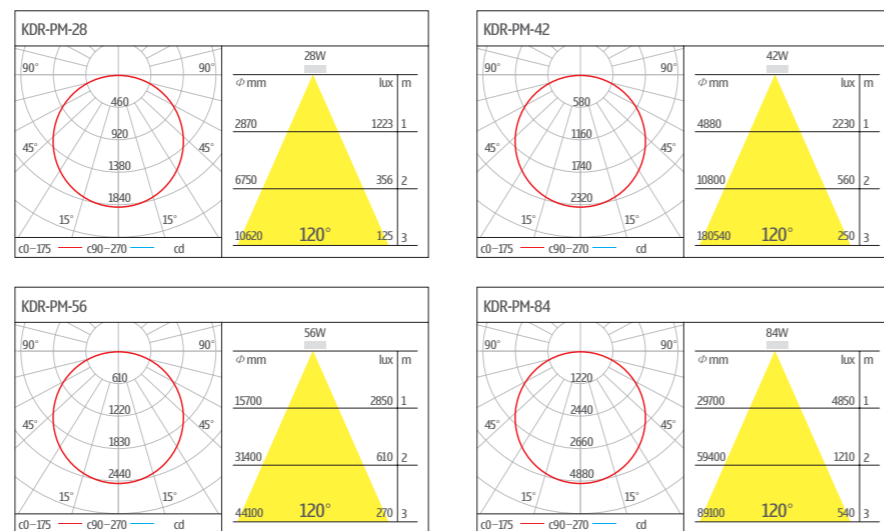
Order No.	Power(W)	Voltage(V)	CRI	Beam Angle(°)	SIZE(MM)
KDR-H100	100	100-240	85	25/45/60/90/100	L374*W367*H459
KDR-H150	150	100-240	85	25/45/60/90/100	L374*W367*H459
KDR-H200	200	100-240	85	25/45/60/90/100	L374*W367*H467
KDR-H300	300	100-240	85	25/45/60/90/100	L374*W367*H467
KDR-H400	400	100-240	85	25/45/60/90/100	L374*W367*H497
KDR-H500	500	100-240	85	25/45/60/90/100	L380*W374*H497



- Surface mounted with high power LED
- Wide Beam Angle
- Efficiency:85Lm/W
- Body of aluminium die casting
- Luminaires are equipped with electronic driver

Order No.	Power(W)	Voltage(V)	CRI	Beam Angle(°)	SIZE(MM)
KDR-PM-28	28*1	100-240	85	120	L312*W310*H80
KDR-PM-42	42*1	100-240	85	120	L372*W310*H80
KDR-PM-56	56*1	100-240	85	120	L432*W310*H80
KDR-PM-84	84*1	100-240	85	120	L492*W310*H80
KDR-PM-98	98*1	100-240	85	120	L552*W310*H80
KDR-PM-112	112*1	100-240	85	120	L612*W310*H80

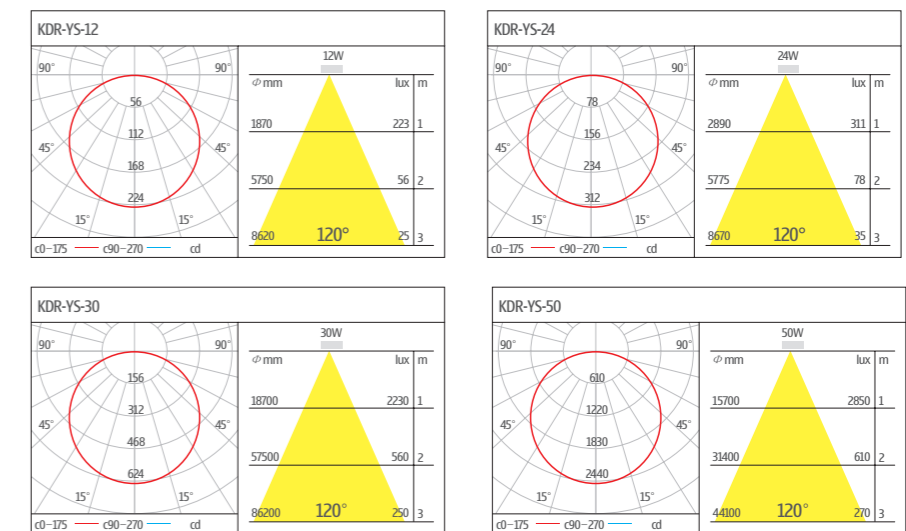
Distribution Curve:



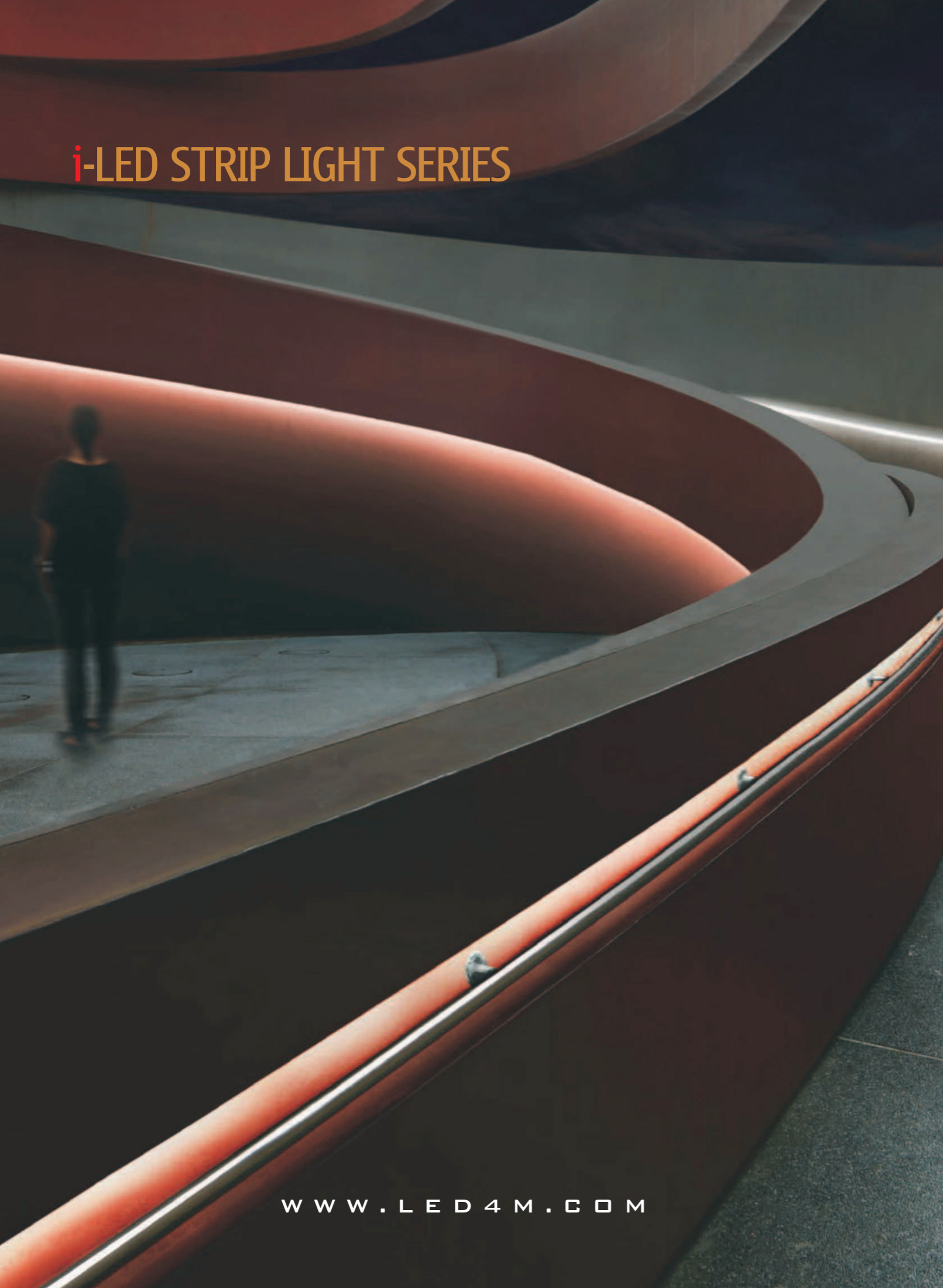
- Surface mounted with high power LED
- Wide Beam Angle
- Efficiency:85Lm/W
- Body of aluminium die casting
- Luminaires are equipped with electronic driver

Order No.	Power(W)	Voltage(V)	CRI	Beam Angle(°)	SIZE(MM)
KDR-YS-12	12*1	100-240	85	120	L345*W95*H60
KDR-YS-24	24*1	100-240	85	120	L400*W130*H60
KDR-YS-30	30*1	100-240	85	120	L520*W220*H75
KDR-YS-50	50*1	100-240	85	120	L520*W220*H75
KDR-YS-60	60*1	100-240	85	120	L550*W250*H60
KDR-YS-80	80*1	100-240	85	120	L550*W250*H60

Distribution Curve:



i-LED STRIP LIGHT SERIES



Led Flexible Neon Strip



- Surface mounted with SMD LED
- Wide Beam Angle
- Efficiency: 85Lm/W
- Luminaires are equipped with electronic driver

Order No.	Power(W)	Voltage(V)	Size(mm)	Color
KDR-NH0816-IP65	9	220	W8*H16	● R ● Y ● B ● G ○ W ● WW
KDR-NH1525-IP65	9	220	W15*H25	● R ● Y ● B ● G ○ W ● WW



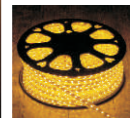
- Surface mounted with SMD LED
- Wide Beam Angle
- Efficiency:85Lm/W
- Luminaires are equipped with electronic driver

Order No.	Power(W)	Color							
KDR-5050-12V-60-IP20	14.4W/M	● R	● Y	● B	● G	○ W	○ WW	○ 暖白/WW	



- Surface mounted with SMD LED
- Wide Beam Angle
- Efficiency:85Lm/W
- Luminaires are equipped with electronic driver

Order No.	Power(W)	Color							
KDR-5050-12V-60-IP65	14.4W/M	● R	● Y	● B	● G	○ W	○ WW	○ 暖白/WW	
KDR-5050-220V-60-IP65	14.4W/M	● R	● Y	● B	● G	○ W	○ WW	○ 暖白/WW	





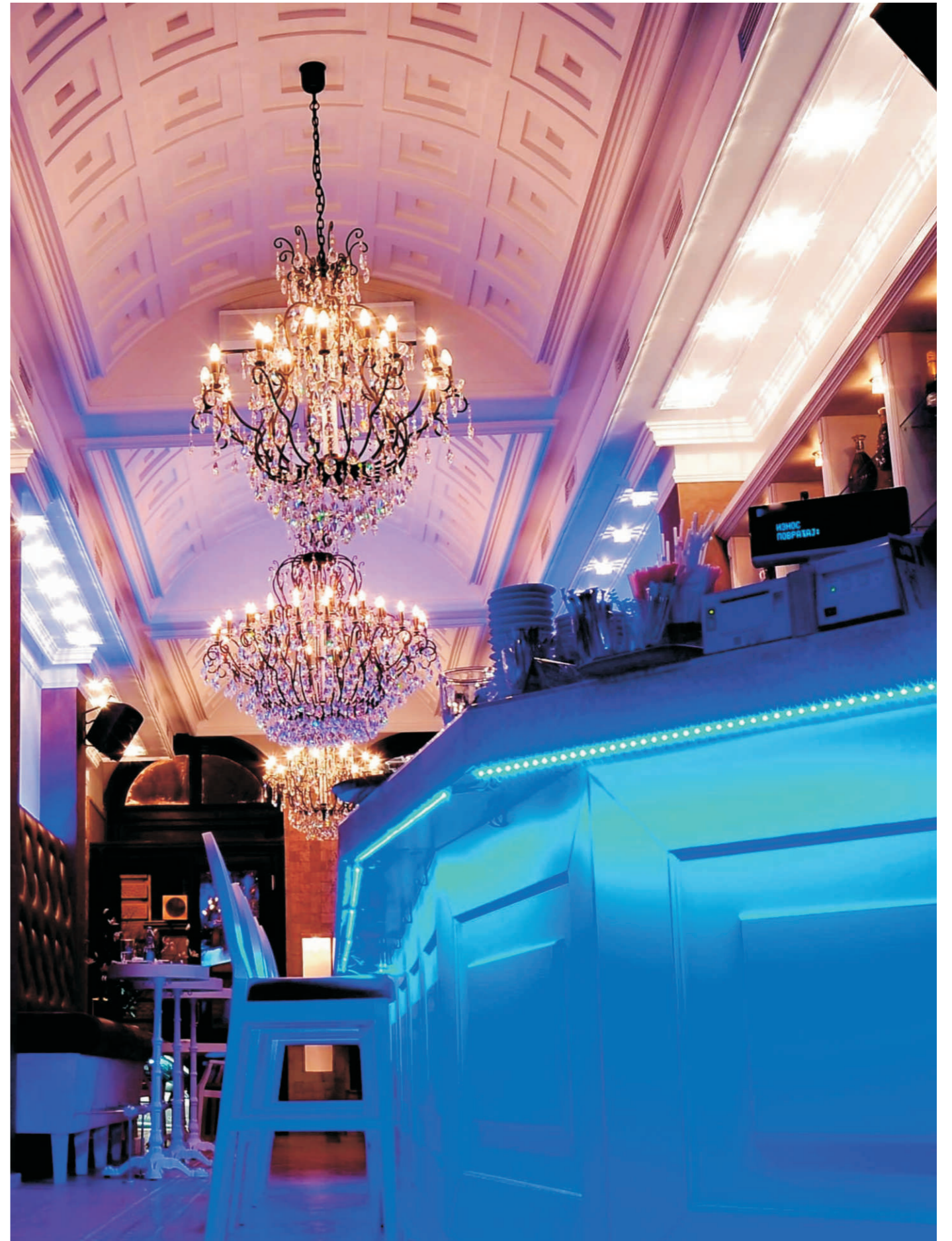
- Surface mounted with SMD LED
- Wide Beam Angle
- Efficiency:85Lm/W
- Luminaires are equipped with electronic driver

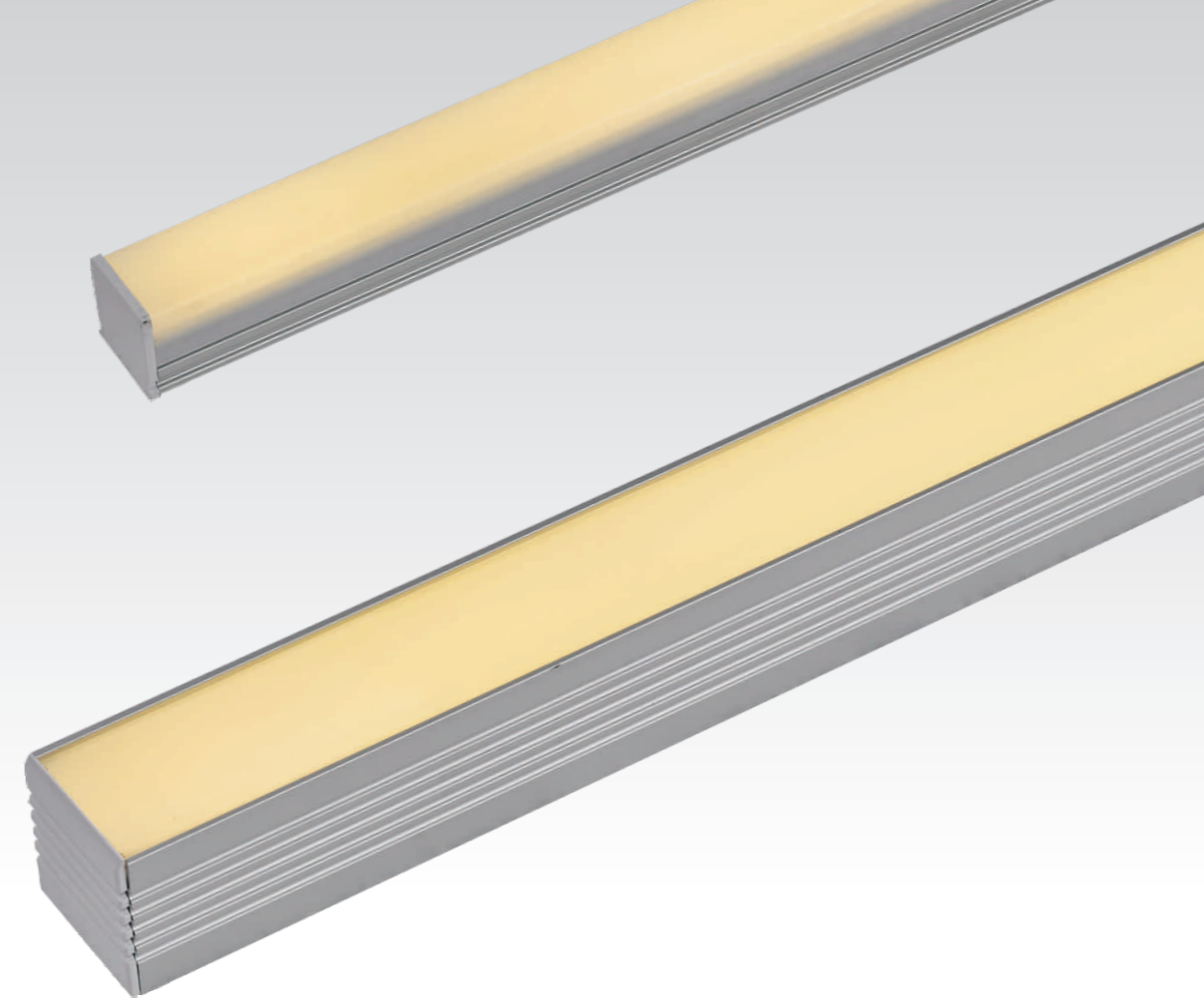
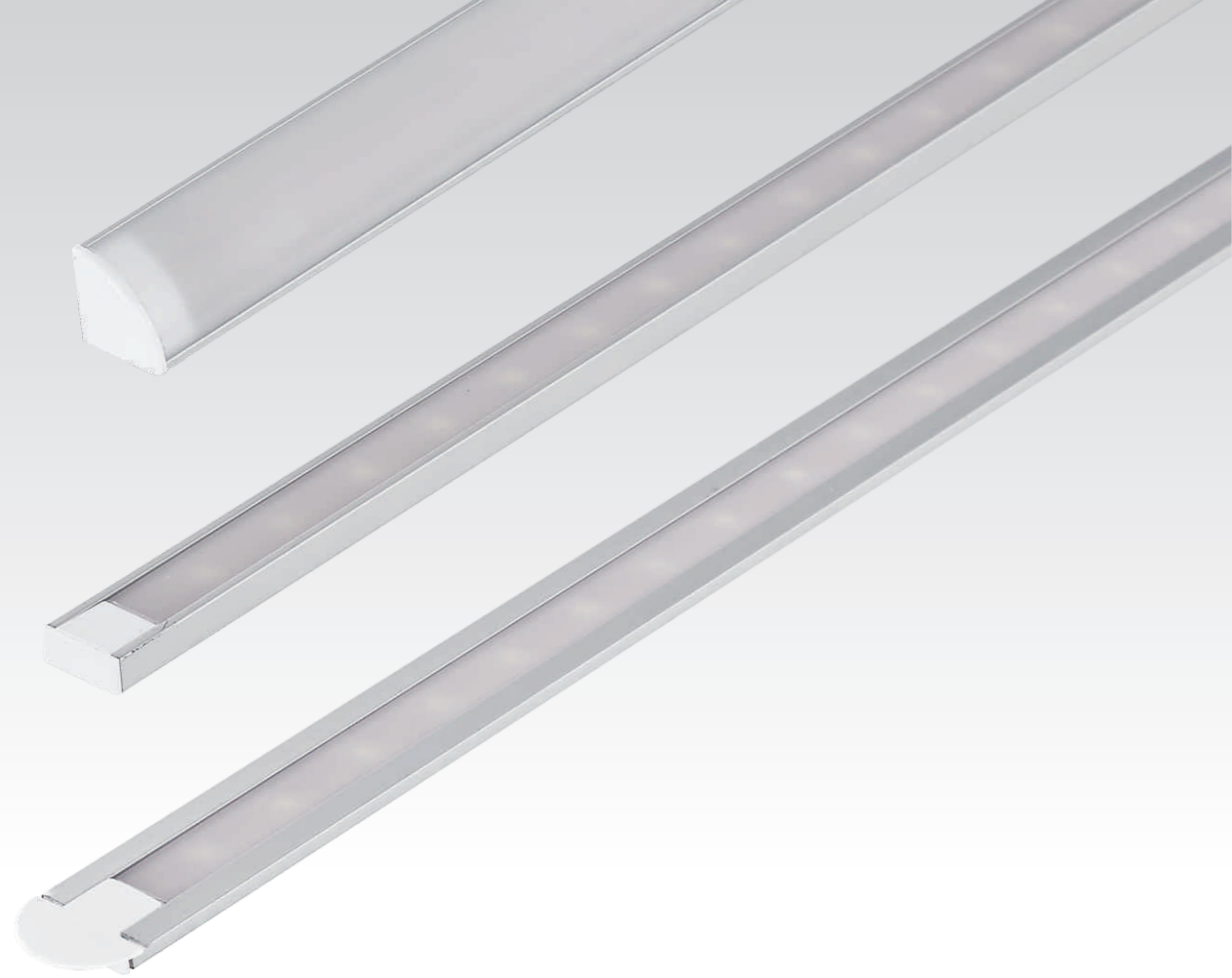
Order No.	Power(W)	Color							
KDR-5050-12V-120-IP20	28.8W/M	<input checked="" type="checkbox"/> R	<input checked="" type="checkbox"/> Y	<input type="checkbox"/> B	<input type="checkbox"/> G	<input type="checkbox"/> W	<input type="checkbox"/> NW	<input type="checkbox"/> WW	<input type="checkbox"/> WW



- Surface mounted with SMD LED
- Wide Beam Angle
- Efficiency:85Lm/W
- Luminaires are equipped with electronic driver

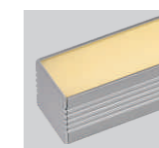
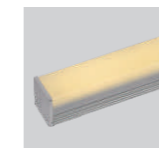
Order No.	Power(W)	Color							
KDR-2835-220V-180-IP65	18W/M	<input checked="" type="checkbox"/> R	<input checked="" type="checkbox"/> Y	<input type="checkbox"/> B	<input type="checkbox"/> G	<input type="checkbox"/> W	<input type="checkbox"/> NW	<input type="checkbox"/> WW	<input type="checkbox"/> WW
KDR-3014-220V-180-IP65	24W/M	<input checked="" type="checkbox"/> R	<input checked="" type="checkbox"/> Y	<input type="checkbox"/> B	<input type="checkbox"/> G	<input type="checkbox"/> W	<input type="checkbox"/> NW	<input type="checkbox"/> WW	<input type="checkbox"/> WW





- Surface mounted with SMD LED
- Wide Beam Angle
- Efficiency:85Lm/W
- Luminaires are equipped with electronic driver

Order No.	Power(W)	Voltage(V)	CRI	Beam Angle(°)	Size(mm)
KDR-1616	14.4	DC12V	85	120	1000*16*16
KDR-1506	14.4	DC12V	85	120	1000*15*6
KDR-2206	14.4	DC12V	85	120	1000*22*6



- Surface mounted with SMD LED
- Wide Beam Angle
- Efficiency:85Lm/W
- Luminaires are equipped with electronic driver

Order No.	Power(W)	Voltage(V)	CRI	Beam Angle(°)	Size(mm)
KDR-2114	14.4	DC12V	85	120	1000*21*14
KDR-3535	14.4	DC12V	85	120	1000*35*35

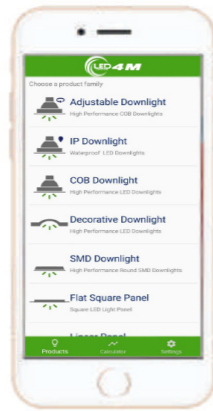
WiFi iOS/Android Software

New Product



Mini WiFi Controller

WiFi-101 APP



Smart Music



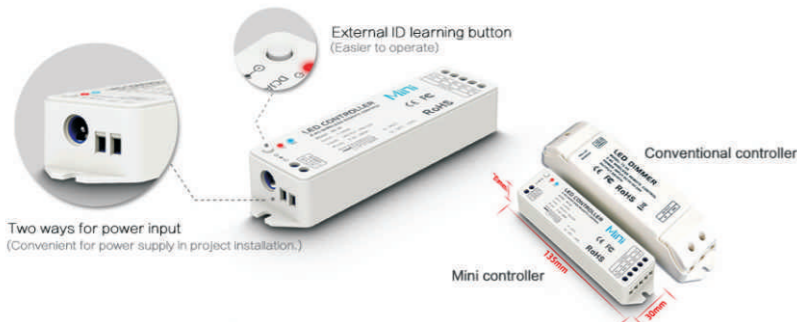
Distance Control



16.7 Million Colors



Lighting Timing



WiFi-101

Input Voltage: 12~24V DC
 Max Current Load: 3A×4CH Max 12A
 Max Output Power: 0~36~72W×4CH
 Output Control: RGBW LED lighting fixture
 Working Temp.: -30°C~55°C
 Dimensions: L125×W33×H20(mm)

POWER SUPPLY SERIES



Norma power supply



Rainproof power supply



IP67 Waterproof power supply



Adapter

CONTROLLER SERIES 控制器系列



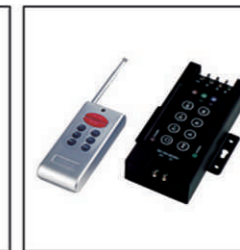
72W 七彩一体控
72W RGB Controller



144W控制器
144W RGB Controller



144W控制器
144W RGB Controller



360W控制器
360W RGB Controller



七彩放大器
Amplifier



跑马灯
Horse Racing Controller



七彩同步控制器
14W RGB Intergratio Controller



12V 七彩一体控
12V RGB Intergratio Controller



220V 七彩一体控
220V RGB Intergratio Controller